



Your Solutions Partner

# Specifications

F.O.B Sedalia, Missouri 65301



**HB2BC**

*shown with optional overhead canopy*

### OPTIONS:

- Overhead canopy - clear acrylic canopy, bullet lamps (2), infrared, 250 watts each, stainless steel adjustable tubing posts
- Laminate finish other than standard eight (8) finishes
- Kickplates (stainless)/ (painted) (laminate to match body)
- Three phase wiring
- Stainless steel spillage pans
- Legs in lieu of casters

### AGENCY LISTING:



**DUKE MANUFACTURING CO.**

**2305 N. Broadway  
St. Louis, MO 63102**

**800.735.3853 Toll Free**

**314.231.5074 Fax**

**www.dukemfg.com**

SS-DM-00048-HBU-05

### Approval Stamp(s):

### PRODUCT INFORMATION:

PROJECT: \_\_\_\_\_

ITEM: \_\_\_\_\_

QUANTITY: \_\_\_\_\_

MODEL:

### Heritage® Buffet - Hot Food Beef Cart

- HB2BC** 32" length unit

### TOP:

- Heavy gauge, 300 Series stainless steel
- Stainless steel perforated platform with "V" edge - all four sides removable - 32"L x 27-3/4"W
- Removable au jus pan
- Carving board - 10" x 14" x 1-1/8" thick, removable
- Meat spike, stainless steel, removable

### BODY:

- Heavy gauge paint grip steel
- Laminate patterns:
 

<input type="checkbox"/> Beige Grafix - <b>HB-01</b>	<input type="checkbox"/> Northern Oak - <b>HB-06</b>
<input type="checkbox"/> Ebony Star - <b>HB-03</b>	<input type="checkbox"/> Ubatuba Granite - <b>HB-13</b>
<input type="checkbox"/> Oxide - <b>HB-04</b>	<input type="checkbox"/> Amber Maple - <b>HB-12</b>
<input type="checkbox"/> Fallen Leaves - <b>HB-07</b>	
<input type="checkbox"/> Acajou Mahogany - <b>HB-11</b>	

- Stainless steel trim strips on corners
- Flanged and channeled edges for strength
- Welded together with reinforcements
- Mounted on NSF listed 5" diameter swivel casters, two with locks, all non-marking polyurethane tires

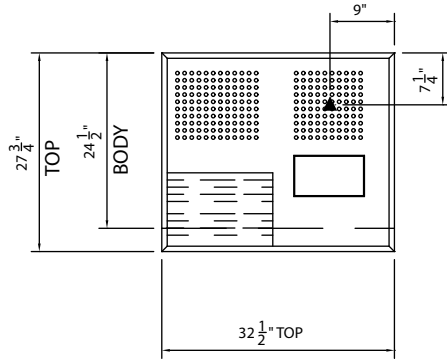
### HOT FOOD SECTION:

- Exposed element in each compartment
  - 500 watt
  - 750 watt
- Voltage/Phase
  - 120 Volt/1 Ph
  - 208 Volt/1 Ph
  - 240 Volt/1 Ph
- (2) hot food wells under platform
- Stainless steel liners, 12" x 20", insulated with fiberglass
- Individual infinite controls
- 6' cord and plug
- Spillage pans included, aluminum

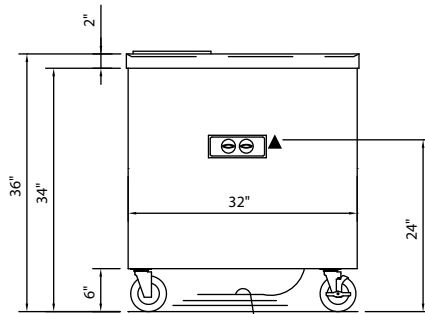
# HERITAGE®

## Heritage® Buffet Beef Cart

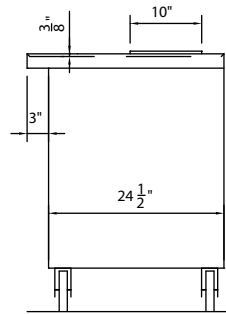
□ HB2BC 32" length unit



TOP VIEW



FRONT VIEW



RIGHT SIDE VIEW

### LEGEND

▲ - ELECTRICAL CONNECTION

DIMENSIONS:

FREIGHT CLASS: 150

Model	Length		Width		Height		# Wells	Cube ft. crated	Weight	
	in.	cm	in.	cm	in.	cm			lbs.	kg
HB2BC	32	81.3	24-1/2	62.2	36	91.4	2	26.3	300	136.4

Model	Carving Area			
	Length		Width	
	in.	cm	in.	cm
HB2BC	32	81.3	27-3/4	70.5

ELECTRICAL SPECIFICATIONS:

Model	120 volt - 500 watt elements			208 volt - 750 watt elements			240 volt - 750 watt elements		
	watts	amps	NEMA	watts	amps	NEMA	watts	amps	NEMA
HB2BC w/bullet lamps	1500	12.5	5-15	2000	9.6	L14-30	2000	8.3	L14-30

**DUKE MANUFACTURING CO.**

2305 N. Broadway  
St. Louis, MO 63102

800.735.3853 Toll Free  
314.231.1130 In Missouri  
314.231.5074 Fax  
www.dukemfg.com



Specification subject to change