



QMPM-48

## QMPM SERIES

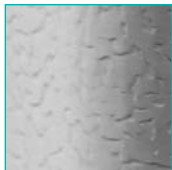
### Quantum Series Medium Temp Open Display Merchandisers

#### MODELS

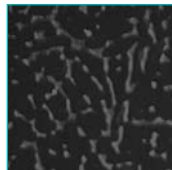
- QMPM-36
- QMPM-48
- QMPM-72

## FEATURES

### NEW STANDARD TEXTURED FINISH



Standard white



Black also available

#### CONSTRUCTION

- 24 gauge painted textured galvanized steel interior and exterior
- Removable two-tier stainless steel display deck
- Full length 8<sup>3</sup>/<sub>4</sub>" wide laminated white formica counter top
- Automatic defrost
- On/off power switch (QMPM-36 and QMPM-48 only)
- Cord and plug (QMPM-36 and QMPM-48 only)

- 1<sup>5</sup>/<sub>8</sub>" foamed-in-place "zero ODP" urethane insulation

#### REFRIGERATION

- Refrigerant: R-134a
- Front air intake and rear discharge
- Forced air ducted flow
- Self-contained, bottom mount refrigeration system
- Temperature range: 34° to 41°F (1° to 5°C)
- R-factor (insulation efficiency rating): 14.01
- Minimum of 6" clearance between cabinet back and wall and a clearance of 10" at top
- **Drain plumbing hookup recommended. Condensate pan available if there is no access to drain plumbing. Condensate pan must be field installed and requires a dedicated 15 amp, 120 volt circuit.**

#### WARRANTY

- Standard limited three year extended compressor and two year limited parts and labor

## OPTIONS

- Add suffix "SS" for stainless steel interior and exterior
- Custom exterior colors
- Night curtain kit
- Light kit
- Night curtain/light kit
- Casters
- Sandwich racks
- Sandwich rack dividers
- 1" vinyl bumper in choice of black, blue, brown, green, red or white
- Condensate evaporator drain pan  
*NOTE: Must be field installed and requires a dedicated 20A, 120v circuit.*

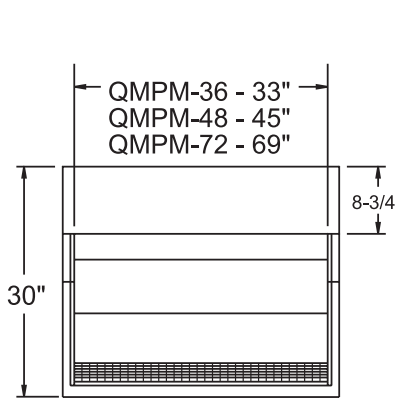


# QMPM SERIES

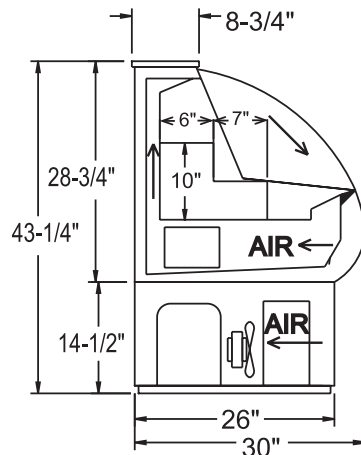
## QUANTUM SERIES MEDIUM TEMP OPEN DISPLAY MERCHANDISERS

### TECHNICAL SPECIFICATIONS

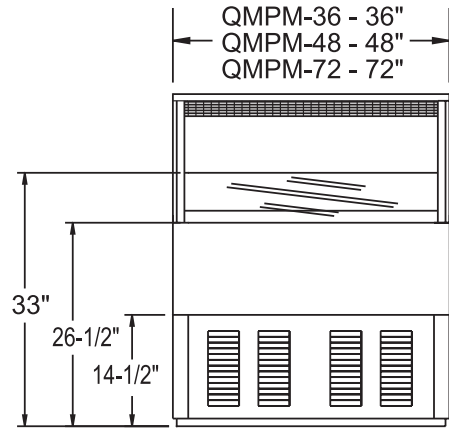
| MODEL   | DIMENSIONS (in.) |    |                                | DIMENSIONS (mm) |     |      | VOLTS | AMPS | UNIT H.P. | CAP. CU. FT. | SHIP CU. FT. | SHIP WT. (LB/KG) |
|---------|------------------|----|--------------------------------|-----------------|-----|------|-------|------|-----------|--------------|--------------|------------------|
|         | L                | D  | H                              | L               | D   | H    |       |      |           |              |              |                  |
| QMPM-36 | 36               | 30 | 43 <sup>1</sup> / <sub>4</sub> | 914             | 775 | 1099 | 115   | 10.3 | 1/3       | 3.7          | 42.0         | 310/141          |
| QMPM-48 | 48               | 30 | 43 <sup>1</sup> / <sub>4</sub> | 1219            | 775 | 1099 | 115   | 15.5 | 1/2       | 5.1          | 54.0         | 410/220          |
| QMPM-72 | 72               | 30 | 43 <sup>1</sup> / <sub>4</sub> | 1829            | 775 | 1099 | 115   | 15.8 | 3/4       | 7.9          | 87.0         | 610/277          |



PLAN VIEW



SIDE VIEW



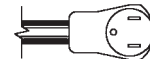
ELEVATION VIEW

### LISTINGS

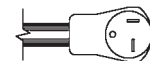


### HOOKUP

QMPM-36 and QMPM-48 via plug in, 9 foot long, flexible 3 wire 14/3 cord with molded plug. QMPM-72 model hardwired.



NEMA 5-15P (QMPM-36)



NEMA 5-20P (QMPM-48)

### RECOMMENDED OPERATING CONDITIONS

- Merchandisers designed to hold product in the 34° to 41°F (1° to 5°C) range
- Designed to operate in air-conditioned stores where the maximum temperature is 75°F and the maximum relative humidity is 55%
- Should not be installed in direct sunlight
- Should not be installed near HVAC vents, fans or doorways that will disrupt airflow and compromise the function of the air screen inside the case
- Bottom shelf should not be loaded such that the front air intake is obstructed
- Factory installed controls should not be altered, removed or replaced without consent of the factory
- Product must not be displayed in the cold air curtain

### BID SPECIFICATIONS

Item no. QMPM-\_\_\_\_\_  
Provide \_\_\_\_\_ ( ) Quantum Series Medium Temp Open Display Merchandiser(s), Master-Bilt model no. QMPM-\_\_\_\_\_.

Merchandiser to be constructed of 24 gauge painted textured galvanized steel interior and exterior with removable two tier

stainless steel display deck. Other standard features include full length 8<sup>3</sup>/<sub>4</sub>" wide laminated white formica counter top, automatic defrost, on/off power switch (QMPM-36 and QMPM-48 only) and have foamed-in-place "zero ODP" urethane insulation. The refrigeration system is to be self-contained, have a front condenser air intake and rear

discharge and use R-134a refrigerant. The temperature range will be 34° to 41°F (1° to 5°C). Merchandiser to have standard limited three year extended compressor warranty and two year limited parts and labor warranty. Merchandiser to be UL and C-UL listed and UL EPH classified.

NOTE: All specifications subject to change without notice.



908 Highway 15 North • New Albany, MS 38652  
PHONE: 800-647-1284 or 662-534-9061 • FAX: 800-232-3966 or 662-534-6049 • www.master-bilt.com

