



TEL-4-30
 (shown with
 ends installed)

TEM/TEL SERIES

Endless Remote Glass Door Merchandisers With Top Mounted Coil

MEDIUM TEMP MODELS (24" WIDE DOORS)

- TEM-3-24 TEM-5-24
 TEM-4-24 TEM-6-24

LOW TEMP MODELS (24" WIDE DOORS)

- TEL-3-24 TEL-5-24
 TEL-4-24 TEL-6-24

MEDIUM TEMP MODELS (30" WIDE DOORS)

- TEM-2-30 TEM-4-30
 TEM-3-30 TEM-5-30

LOW TEMP MODELS (30" WIDE DOORS)

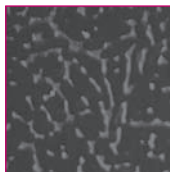
- TEL-2-30 TEL-4-30
 TEL-3-30 TEL-5-30

FEATURES

STANDARD TEXTURED FINISH



Standard white



Black also available

CONSTRUCTION

- Painted textured galvanized steel cabinet
- 2" foamed-in-place "zero ODP" urethane insulation
- A large heavy duty rub rail and kick plate to protect from abuse
- Five white cantilever epoxy-coated welded wire shelves with price tag molding per door
- Shelves rated to support 110 lbs. each
- Product stop feature to prevent product from falling behind shelves
- Ends must be ordered separately
- Standard LED lighting
- Pre-piped drain in bottom of each section for cleaning purposes (with removable plug)

DOORS

- Choice of 24" or 30" wide glass doors
- Self-closing door hinge with adjustable torsion control
- Standard black door and frame (optional colors available)

REFRIGERATION

- All models designed for remote refrigeration systems
- Refrigerant: R-404A
- Factory tested refrigeration system
- Heavy-duty copper tube evaporator coil
- Choice of electric or hot gas defrost
- Pre-mounted expansion valve
- Minimum 4" clearance required between cabinet back and wall with a 4" open space at top and one or both ends
- Temperature ranges:
 - TEM models: 34° to 41°F (1°to 5°C)
 - TEL models: 0° to -15°F (18° to -26°C)
- R-factor (insulation efficiency rating): 18.75

WARRANTY

- 2 year limited parts and 90 day labor

When ordering multi-cabinet line-ups, please note:

- Pre-wired cabinet-to-cabinet electrical terminal block connectors are standard
- A 2" thick partition is required between each endless module if:
 - Each utilizes its own condensing unit or
 - One module is a freezer and one is a cooler
- Joining kits for linking together modules are standard
- Please allow an additional 1" clearance for case and assembly dimensional tolerance stack-up

OPTIONS

- Right or left hand end kits
 Custom colors
 Additional horizontal lighting
 Partitions
 Kickplate
 Additional 30" cantilever shelves
 Baskets



TEM/TEL SERIES

ENDLESS REMOTE GLASS DOOR MERCHANDISERS
WITH TOP MOUNTED COIL

TECHNICAL SPECIFICATIONS

MODEL	DIMENSIONS (in.)			DIMENSIONS (mm)			NO. OF DOORS	NO. OF SHELVES	SHELVING AREA SQ. FT.	USABLE CU. FT.	PRODUCT FACING SQ. FT.	NO. OF INTERIOR LIGHTS
	L*	D	H**	L*	D	H**						
24" WIDE DOOR MODELS												
TEM/TEL-3-24	72 ^{5/16}	38 ^{1/4}	83 ^{3/4}	1837	972	2127	3	15	57.7	67.5	31.8	4
TEM/TEL-4-24	96 ^{1/16}	38 ^{1/4}	83 ^{3/4}	2440	972	2127	4	20	76.7	89.7	42.2	5
TEM/TEL-5-24	119 ^{13/16}	38 ^{1/4}	83 ^{3/4}	3043	972	2127	5	25	95.7	111.8	52.6	6
TEM/TEL-6-24	143 ^{9/16}	38 ^{1/4}	83 ^{3/4}	3646	972	2127	6	30	114.7	134.0	63.1	7
30" WIDE DOOR MODELS												
TEM/TEL-2-30	61 ^{15/16}	38 ^{1/4}	83 ^{3/4}	1573	972	2127	2	10	49.5	57.8	27.2	3
TEM/TEL-3-30	92 ^{3/8}	38 ^{1/4}	83 ^{3/4}	2346	972	2127	3	15	73.8	86.2	40.6	4
TEM/TEL-4-30	122 ^{13/16}	38 ^{1/4}	83 ^{3/4}	3119	972	2127	4	20	98.1	114.6	53.9	5
TEM/TEL-5-30	153 ^{1/4}	38 ^{1/4}	83 ^{3/4}	3893	972	2127	5	25	122.4	143.0	67.3	6

*Add 2" (51mm) to length for each end or insulated partition. Also allow an additional 1" clearance for case and assembly dimensional tolerance stack-up. **Height includes junction box.

NOTE: All models furnished with R-404A expansion valve unless otherwise specified.

ELECTRICAL

MODEL	120 VOLT, 1 PHASE			230 VOLT, 1 PHASE	
	LED LIGHTS	HEATERS	FANS	FANS	DEFROST
MEDIUM TEMP 24" WIDE DOORS					
TEM-3-24	0.85	2.74	1.0	N/A	N/A
TEM-4-24	1.13	3.57	1.0	N/A	N/A
TEM-5-24	1.42	4.48	1.5	N/A	N/A
TEM-6-24	1.7	5.23	1.5	N/A	N/A
MEDIUM TEMP 30" WIDE DOORS					
TEM-2-30	0.57	2.09	1.0	N/A	N/A
TEM-3-30	0.85	3.04	1.0	N/A	N/A
TEM-4-30	1.13	3.89	1.5	N/A	N/A
TEM-5-30	1.42	4.91	1.5	N/A	N/A
LOW TEMP 24" WIDE DOORS					
TEL-3-24	0.85	5.47	N/A	0.4	5.52
TEL-4-24	1.13	7.22	N/A	0.4	7.16
TEL-5-24	1.42	8.85	N/A	0.6	10.11
TEL-6-24	1.7	10.46	N/A	0.6	13.32
LOW TEMP 30" WIDE DOORS					
TEL-2-30	0.57	4.41	N/A	0.4	5.52
TEL-3-30	0.85	6.45	N/A	0.4	7.16
TEL-4-30	1.13	8.53	N/A	0.6	10.11
TEL-5-30	1.42	10.47	N/A	0.6	13.32

SHIPPING WEIGHTS

MODEL	SHIP WT. LB/KG
MEDIUM TEMP 24" WIDE DOORS	
TEM-3-24	1325/602
TEM-4-24	1520/691
TEM-5-24	1720/782
TEM-6-24	2140/973
MEDIUM TEMP 30" WIDE DOORS	
TEM-2-30	755/343
TEM-3-30	1435/652
TEM-4-30	1670/759
TEM-5-30	2000/909
LOW TEMP 24" WIDE DOORS	
TEL-3-24	1245/566
TEL-4-24	1300/591
TEL-5-24	1720/782
TEL-6-24	2140/973
LOW TEMP 30" WIDE DOORS	
TEL-2-30	1085/493
TEL-3-30	1325/602
TEL-4-30	1915/870
TEL-5-30	1955/889

LISTINGS



HOOKUP

Hardwire, remote refrigeration.

MODULES REQUIRED FOR 24" WIDE DOOR LINEUPS & BTU PERFORMANCE DATA

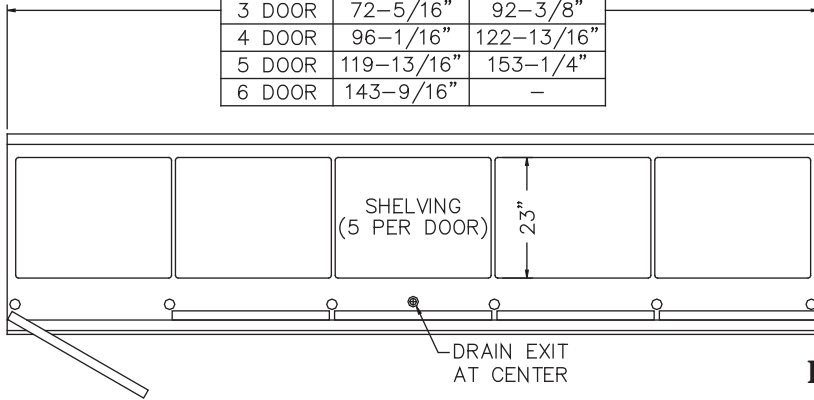
NO. OF DOORS	MODULES REQUIRED				TOTAL OVERALL LENGTH WITH ONE PAIR OF 2" ENDS	+20°F SUCTION MIN. BTUs (75°F STORE, 55% RH, +35°F AVERAGE PRODUCT TEMP.)	-11°F SUCTION MIN. BTUs (75°F STORE, 55% RH, -3°F AVERAGE PRODUCT TEMP.)	-18°F SUCTION MIN. BTUs (75°F STORE, 55% RH, -12°F AVERAGE PRODUCT TEMP.)
	3 DOOR	4 DOOR	5 DOOR	6 DOOR				
3	1				76 ⁵ / ₁₆	3750	4750	5125
4		1			100 ¹ / ₁₆	4600	6150	6550
5			1		123 ¹³ / ₁₆	5750	7625	8300
6				1	147 ⁹ / ₁₆	6900	9150	9960
7	1	1			172 ³ / ₈	8050	10,675	11,620
8		2			196 ¹ / ₈	9200	12,200	13,280
9		1	1		219 ⁷ / ₈	10,350	13,725	14,940
10			2		243 ⁵ / ₈	11,500	15,250	16,600
11			1	1	267 ³ / ₈	12,650	16,775	18,260
12				2	291 ¹ / ₈	13,800	18,300	19,920
13		2	1		315 ¹⁵ / ₁₆	14,950	19,825	21,580
14		2		1	339 ¹¹ / ₁₆	16,100	21,350	23,240
15			3		363 ⁷ / ₁₆	17,250	22,875	24,900
16		4			388 ¹ / ₄	18,400	24,400	26,560
17			1	2	410 ¹⁵ / ₁₆	19,550	25,925	28,220
18				3	434 ¹¹ / ₁₆	20,700	27,450	29,880
19		1	3		459 ¹ / ₂	21,850	28,975	31,540
20			4		483 ¹ / ₄	23,000	30,500	33,200
21	1			3	507	24,150	32,025	34,860
22		1		3	530 ³ / ₄	25,300	33,550	36,520
23			1	3	554 ¹ / ₂	26,450	35,075	38,180
24				4	578 ¹ / ₄	27,600	36,600	39,840
25			5		603 ¹ / ₁₆	28,750	38,125	41,500

MODULES REQUIRED FOR 30" WIDE DOOR LINEUPS & BTU PERFORMANCE DATA

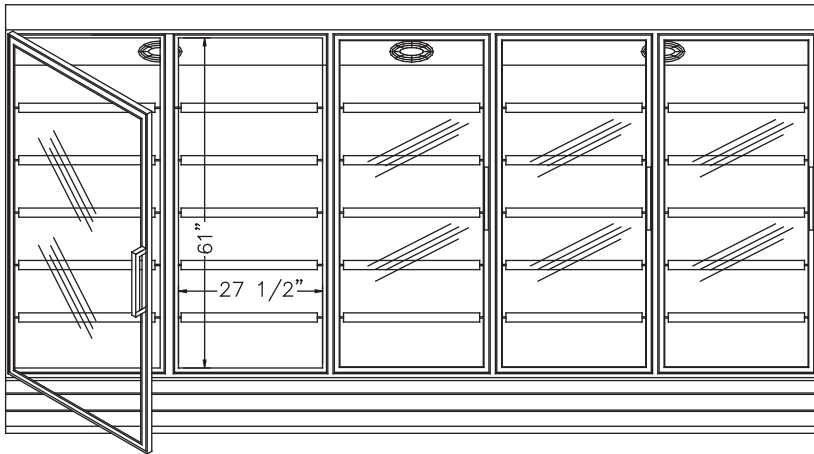
NO. OF DOORS	MODULES REQUIRED				TOTAL OVERALL LENGTH WITH ONE PAIR OF 2" ENDS	+20°F SUCTION MIN. BTUs (75°F STORE, 55% RH, +35°F AVERAGE PRODUCT TEMP.)	-11°F SUCTION MIN. BTUs (75°F STORE, 55% RH, -3°F AVERAGE PRODUCT TEMP.)	-18°F SUCTION MIN. BTUs (75°F STORE, 55% RH, -12°F AVERAGE PRODUCT TEMP.)
	2 DOOR	3 DOOR	4 DOOR	5 DOOR				
2	1				65 ¹⁵ / ₁₆	2800	3300	3550
3		1			96 ³ / ₈	3750	4750	5125
4			1		126 ¹³ / ₁₆	4600	6150	6550
5				1	157 ¹ / ₄	5750	7625	8300
6		2			188 ³ / ₄	6900	9150	9960
7	1			1	219 ³ / ₁₆	8050	10,675	11,620
8		1		1	249 ⁵ / ₈	9200	12,200	13,280
9			1	1	280 ¹ / ₁₆	10,350	13,725	14,940
10				2	310 ¹ / ₂	11,500	15,250	16,600
11		2		1	342	12,650	16,775	18,260
12	1			2	372 ⁷ / ₁₆	13,800	18,300	19,920
13		1		2	402 ⁷ / ₈	14,950	19,825	21,580
14			1	2	433 ³ / ₁₆	16,100	21,350	23,240
15				3	463 ³ / ₄	17,250	22,875	24,900
16		2		2	495 ¹ / ₄	18,400	24,400	26,560
17	1			3	525 ¹¹ / ₁₆	19,550	25,925	28,220
18		1		3	556 ¹ / ₈	20,700	27,450	29,880
19			1	3	586 ⁹ / ₁₆	21,850	28,975	31,540
20				4	617	23,000	30,500	33,200
21		2		3	648 ¹ / ₂	24,150	32,025	34,860
22	1			4	678 ¹⁵ / ₁₆	25,300	33,550	36,520
23		1		4	709 ³ / ₈	26,450	35,075	38,180
24			1	4	739 ¹³ / ₁₆	27,600	36,600	39,840
25				5	770 ¹ / ₄	28,750	38,125	41,500

TECHNICAL DRAWINGS

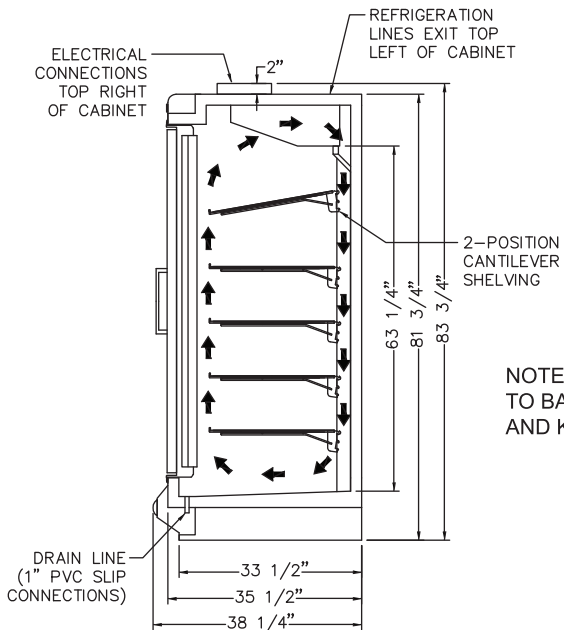
OVERALL LENGTH WITHOUT ENDS		
MODEL	24" DOORS	30" DOORS
2 DOOR	—	61-15/16"
3 DOOR	72-5/16"	92-3/8"
4 DOOR	96-1/16"	122-13/16"
5 DOOR	119-13/16"	153-1/4"
6 DOOR	143-9/16"	—



PLAN VIEW



ELEVATION VIEW



NOTE: MINIMUM DEPTH FRONT TO BACK WITH DOORS, ENDS AND KICKPLATE REMOVED IS 35-1/2"

SIDE VIEW



TEM/TEL SERIES

ENDLESS REMOTE GLASS DOOR MERCHANDISERS
WITH TOP MOUNTED COIL

REQUIRED CONDENSING UNITS

Use this chart to determine the correct condensing unit for your endless lineup.
Unless already indicated, add suffix "B" for one phase or "C" for three phase model.

NO. OF DOORS	+35°F AVERAGE PRODUCT TEMP. +20°F SUCTION 75°F AIR CONDITIONED STORE 55% RELATIVE HUMIDITY			-3°F AVERAGE PRODUCT TEMP. -11°F SUCTION 75°F AIR CONDITIONED STORE 55% RELATIVE HUMIDITY			-12°F AVERAGE PRODUCT TEMP. -18°F SUCTION 75°F AIR CONDITIONED STORE 55% RELATIVE HUMIDITY		
	COND. UNIT REQUIRED FOR AIR TEMP. ENTERING CONDENSER*			COND. UNIT REQUIRED FOR AIR TEMP. ENTERING CONDENSER*			COND. UNIT REQUIRED FOR AIR TEMP. ENTERING CONDENSER*		
	90°F	100°F	110°F	90°F	100°F	110°F	90°F	100°F	110°F
2	MHHZ0071B	MHHZ0071B	MHHZ0071B	MHLZ0071	MHLZ0071	MHLZ0071	MHLZ0091	MHLZ0091	MHLZ0091
3	MHHZ0071B	MHHZ0071B	MHHZ0071B	MHLZ0071	MHLZ0091	MHLZ0091	MHLZ0091	MHLZ0121	MHLZ0121
4	MHHZ0071B	MHHX0081B	MHHX0081B	MHLZ0091	MHLZ0091	MHLZ0121	MHLZ0121	MHLZ0121	MHLZ0121
5	MHHZ0081B	MHHZ0081B	MHHZ0111	MHLZ0091	MHLZ0121	MHLZ0121	MHLZ0121	MSLZ0151	MSLZ0181
6	MHHZ0111	MHHZ0111	MHHZ0111	MHLZ0121	MHLZ0121	MSLZ0151	MSLZ0151	MSLZ0181	MSLZ0221
7	MHHZ0111	MHHZ0111	MHHZ0171	MHLZ0121	MSLZ0151	MSLZ0181	MSLZ0181	MSLZ0221	MSLZ0221
8	MHHZ0171	MHHZ0171	MHHZ0171	MSLZ0151	MSLZ0181	MSLZ0181	MSLZ0221	MSLZ0221	MSLZ0221
9	MHHZ0171	MHHZ0171	MHHZ0191	MSLZ0181	MSLZ0181	MSLZ0221	MSLZ0221	MSLZ0221	BSLZ0750
10	MHHZ0171	MHHZ0191	MHHZ0191	MSLZ0181	MSLZ0221	MSLZ0221	MSLZ0221	BSLZ0750	BSLZ0750
11	MHHZ0191	MHHZ0191	MHHZ0221	MSLZ0221	MSLZ0221	MSLZ0221	BSLZ0750	BSLZ0750	BSLZ0750
12	MHHZ0191	MHHZ0221	MHHZ0221	MSLZ0221	MSLZ0221	BSLZ0750	BSLZ0750	BSLZ0750	BSLZ1000
13	MHHZ0191	MHHZ0221	MHHZ0251	MSLZ0221	BSLZ0750	BSLZ0750	BSLZ0750	BSLZ1000	BCLZ0750
14	MHHZ0221	MHHZ0251	MHHZ0251	BSLZ0750	BSLZ0750	BSLZ0750	BSLZ1000	BSLZ1000	BSLZ1500
15	MHHZ0251	MHHZ0251	MHHZ0301	BSLZ0750	BSLZ0750	BSLZ1000	BSLZ1000	BSLZ1000	BSLZ1500
16	MHHZ0251	MHHZ0251	MHHZ0301	BSLZ0750	BSLZ1000	BSLZ1000	BSLZ1000	BSLZ1500	BSLZ1500
17	MHHZ0251	MHHZ0301	MHHZ0331	BSLZ0750	BSLZ1000	BSLZ1000	BSLZ1500	BSLZ1500	BSLZ1500
18	MHHZ0301	MHHZ0301	MHHZ0331	BSLZ1000	BSLZ1000	BSLZ1500	BSLZ1500	BSLZ1500	BSLZ1500
19	MHHZ0301	MHHZ0331	MHHZ0331	BSLZ1000	BSLZ1000	BSLZ1500	BSLZ1500	BSLZ1500	BSLZ1500
20	MHHZ0301	MHHZ0331	MHHZ0431	BSLZ1000	BSLZ1500	BSLZ1500	BSLZ1500	BSLZ1500	BCLZ1500
21	MHHZ0331	MHHZ0331	MHHZ0431	BSLZ1000	BSLZ1500	BSLZ1500	BSLZ1500	BSLZ1500	BCLZ1500
22	MHHZ0331	MHHZ0431	MHHZ0431	BSLZ1500	BSLZ1500	BSLZ1500	BSLZ1500	BCLZ1500	BCLZ1500
23	MHHZ0331	MHHZ0431	MHHZ0431	BSLZ1500	BSLZ1500	BSLZ1500	BSLZ1500	BCLZ1500	BCLZ1500
24	MHHZ0431	MHHZ0431	MHHZ0431	BSLZ1500	BSLZ1500	BSLZ1500	BCLZ1500	BCLZ1500	BCLZ1500
25	MHHZ0431	MHHX0441	MHHZ0501	BSLZ1500	BSLZ1500	BSLZ1500	BCLZ1500	BCLZ1500	BCLZ1500

*Condensing unit and line size based on 100' line run.

See the Master-Bilt Condensing Unit & Refrigeration Systems I/O Manual for other conditions.

For other than high capacity condensing units, consult factory.

BID SPECIFICATIONS

Item no. TEM-_____ and/or TEL-_____.

Provide _____ () Endless Remote Glass Door Merchandisers - Top Mounted model no. TEM-_____ and/or TEL-_____.

Merchandiser to be constructed of painted textured galvanized steel with 2" foamed-in-place "zero ODP" urethane insulation. Merchandiser may be used as a stand-alone unit or combined in a modular endless design.

LED lighting will be standard on all models.

Merchandiser will contain five white cantilever epoxy-coated welded wire shelves with price tag molding per door. In addition, a product stop feature will

prevent product from falling behind shelves.

Other standard features to include:

- Heavy-duty rub rail and kick plate
- Pre-wired cabinet-to-cabinet electrical terminal block connectors
- Standard joining kits when linking together multi-door modules
- Pre-piped drain in bottom of each section with removable plug for cleaning

Glass doors will be supplied with self-closing door hinge and provision for easy adjustment of torsion and leveling. Merchan-

diser supplied with either 24" or 30" wide glass doors. Door and frame provided in standard black finish with optional colors available.

The refrigeration system will be remote and will contain a full-length heavy-duty copper tube evaporator coil and pre-mounted expansion valve. There will also be a choice of electric or hot gas defrost. All models will use R-404A refrigerant.

Temperature ranges will be:

- TEM models: 34° to 41°F (1° to 5°C)
- TEL models: 0° to -15°F (18° to -26°C)

Merchandiser to be provided with two year limited parts and 90 day labor warranty.

NOTE: Cabinet designed for optimum performance in air-conditioned area at 75°F ambient and 55% relative humidity. All specifications subject to change without notice.

MBMASTER-BILT
Refrigeration Solutions

908 Highway 15 North • New Albany, MS 38652
PHONE: 800-647-1284 or 662-534-9061 • FAX: 800-232-3966 or 662-534-6049 • www.master-bilt.com

Standex
Food Service Equipment Group