



ITEM NO. _____
 PROJECT _____
 LOCATION _____
 DATE _____ QTY. _____



MUF SERIES

Undercounter/Countertop Worktable Freezers

MODELS

- MUF081
- MUF081SMS/0M (cold wall model)
- MUF162
- MUF202
- MUF253
- MUF293
- MUF334



UL EPH listing applies to all models except MUF081 and MUF334.
 NSF applies to MUF081 only.

FEATURES

CONSTRUCTION

- Exterior front, sides, top and doors are stainless steel
- Exterior bottom and back are galvanized steel
- Interior liner and door panel are smooth aluminum
- 2" foamed-in-place polyurethane insulated walls
- Four standard 4 1/2" casters
- One epoxy coated shelf per door

DOORS

- Standard pull door handles
- Number of doors:
 - MUF081..... 1
 - MUF162 & MUF202..... 2
 - MUF253 & MUF293..... 3
 - MUF334..... 4
- Magnetic gaskets

REFRIGERATION

- Bottom mounted, self-contained refrigeration system
- Refrigerant: R-404A
- MUF081 model is available in forced air or cold wall evaporator system
- Manual defrost on MUF081 model, electric defrost on forced air models
- Undercounter/countertop worktables may be enclosed on two sides since air intake and exhaust is through the base of the unit
- Minimum 4" clearance required from cabinet back to wall and from cabinet bottom to floor
- Refrigerant controlled by expansion valve
- Temperature range: -5°F to 5°F (-21°C to -15°C)

WARRANTY

- Standard limited three year extended compressor and two year limited parts and labor

OPTIONS

- Backsplash
- Legs in lieu of casters
- Door lock
- Self-standing bun pan rack
- Stainless steel interior
- White Plasti-Tuff™ top
- Refrigerated drawers, set of two per door opening, except on right hand doors (not available on single door models)

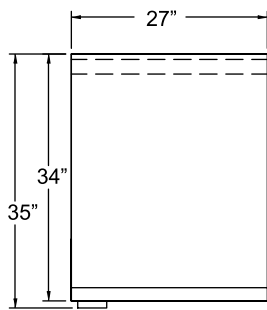


TECHNICAL SPECIFICATIONS

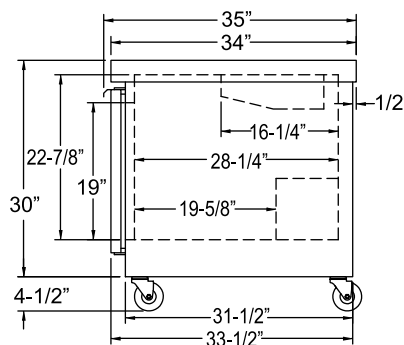
MODEL	DIMENSIONS (in.)			DIMENSIONS (mm)			VOLTS**	AMPS	UNIT H.P.	NO. OF SHELVES	CAP. CU. FT.	SHIP CU. FT.	SHIP WT. LB/KG
	L	D	H*	L	D	H*							
MUF081 (forced air)	27	35	34 ^{1/2}	686	889	914	115	8.1	1/2	1 per door	8.0	24.3	220/100
MUF081SMS/OM (cold wall)	27	35	34 ^{1/2}	686	889	914	115	6.7	1/2	1 per door	8.0	24.3	205/93
MUF162	47 ^{3/4}	35	34 ^{1/2}	1213	889	914	115	9.7	1/2	1 per door	16.0	53.1	400/182
MUF202	59 ^{3/4}	35	34 ^{1/2}	1518	889	914	115	9.7	1/2	1 per door	20.0	65.2	430/195
MUF253	71 ^{3/4}	35	34 ^{1/2}	1822	889	914	115	11.0	3/4	1 per door	24.0	77.4	450/205
MUF293	83 ^{3/4}	35	34 ^{1/2}	2127	889	914	115	12.3	3/4	1 per door	29.0	89.5	460/209
MUF334	95 ^{3/4}	35	34 ^{1/2}	2432	889	914	115/208-230	9.5	1	1 per door	33.0	101.6	470/214

*Height includes casters. **MUF334 operates on a minimum of 208 volts. A voltage boosting transformer (part no. 39-01087) must be used when the supply voltage is less than 208 volts.

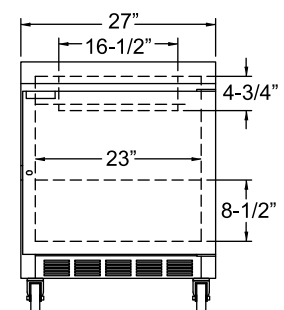
MODEL MUF081 (forced air)



PLAN VIEW

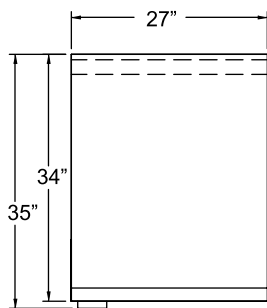


SIDE VIEW

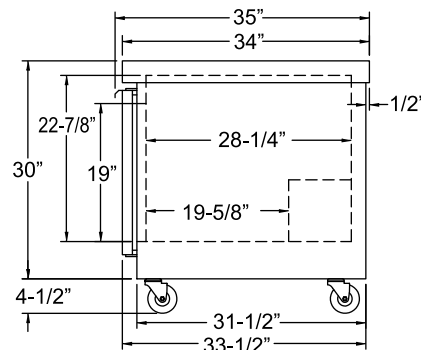


ELEVATION VIEW

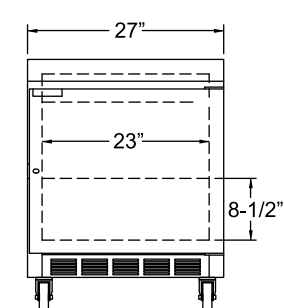
MODEL MUF081 (cold wall)



PLAN VIEW

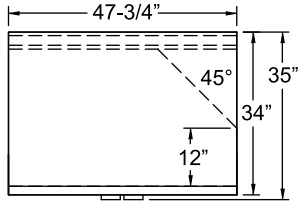


SIDE VIEW

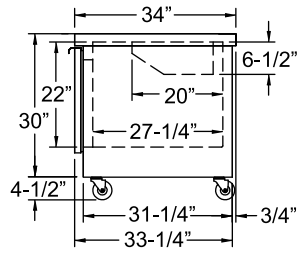


ELEVATION VIEW

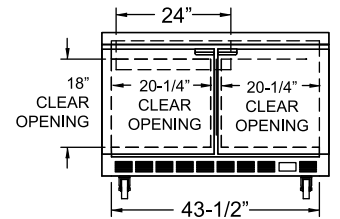
MODEL MUF162



PLAN VIEW

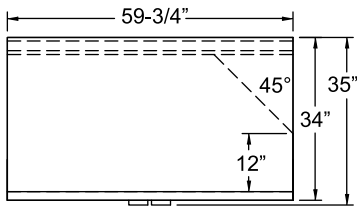


SIDE VIEW

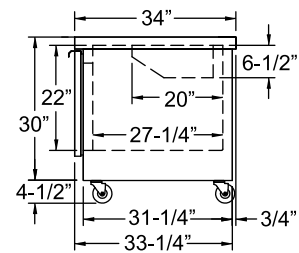


ELEVATION VIEW

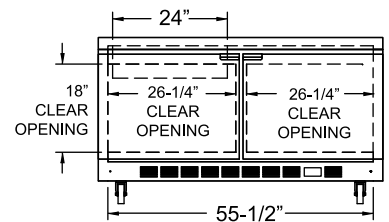
MODEL MUF202



PLAN VIEW

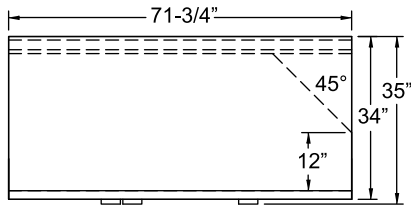


SIDE VIEW

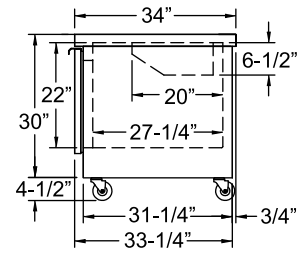


ELEVATION VIEW

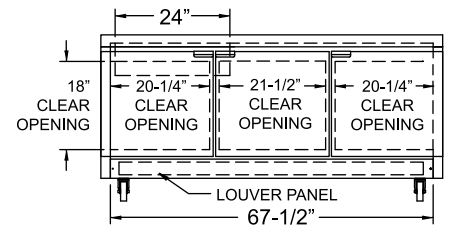
MODEL MUF253



PLAN VIEW

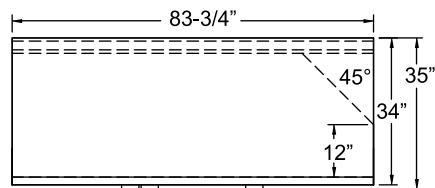


SIDE VIEW

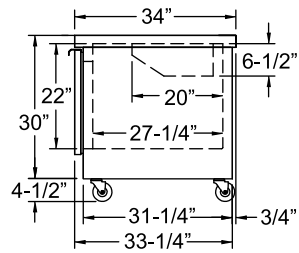


ELEVATION VIEW

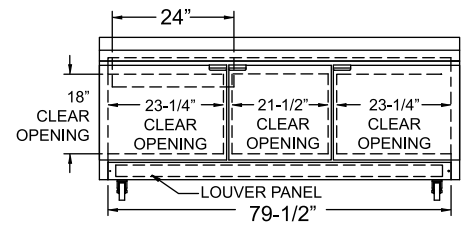
MODEL MUF293



PLAN VIEW

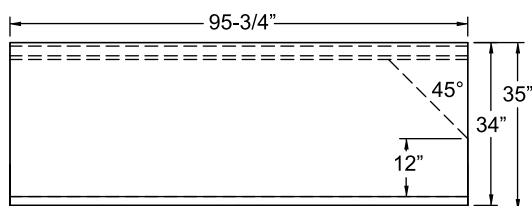


SIDE VIEW

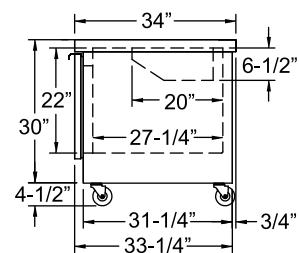


ELEVATION VIEW

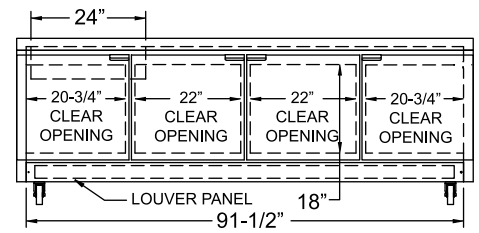
MODEL MUF334



PLAN VIEW



SIDE VIEW

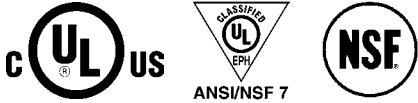


ELEVATION VIEW



MUF SERIES UNDERCOUNTER/COUNTERTOP WORKTABLE FREEZERS

LISTINGS



UL EPH listing applies to all models except MUF081 and MUF334. NSF applies to MUF081 only.

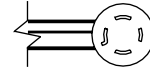
HOOKUP

Via plug in, 10 foot long flexible three wire 14/3 cord with molded plug.



NEMA 5-15P

MUF334: Via plug in, 10 foot long flexible four wire 208-230v 12/4 cord with neutral and ground wires and molded plug.



NEMA L14-20P (MUF334 model)

BID SPECIFICATIONS

Item no. MUF _____
Provide _____ () Undercounter/countertop worktable freezer(s), Master-Bilt model no. MUF _____.

Freezer's exterior front, sides, top and doors will be stainless steel while the exterior bottom and back will be galvanized steel. The interior liner and door panel will be smooth aluminum. Standard features will include one epoxy-coated shelf per door and

four 4 $\frac{1}{2}$ " casters.

The refrigeration system will be bottom mounted and self-contained. The refrigerant will be R-404A. The temperature range will be -5°F to 5°F (-21°C to -15°C). MUF081 model is available in forced air or cold wall evaporator system. Manual defrost will be standard on MUF081 model, automatic defrost on forced air models. Freezers may be enclosed on three sides since air intake and

exhaust is through the base of the unit.

Refrigerant will be controlled by expansion valve. Freezer to have standard limited three year extended compressor warranty and two year limited parts and labor warranty.

Freezer to be UL and C-UL listed and UL EPH classified (except for MUF081 and MUF334 models). NSF listing applies to MUF081 model only.

NOTE: Cabinet designed for optimum performance in air-conditioned area at 75°F ambient and 55% relative humidity. All specifications subject to change without notice.



908 Highway 15 North • New Albany, MS 38652
PHONE: 800-647-1284 or 662-534-9061 • FAX: 800-232-3966 or 662-534-6049 • www.master-bilt.com

