



TAF-48HDSA

## TAC/TAF SERIES

### Foodservice Solid Door Reach-ins

#### REFRIGERATORS

- TAC-27HDSA
- TAC-48HDSA
- TAC-74HDSA

#### FREEZERS

- TAF-27HDSA
- TAF-48HDSA
- TAF-74HDSA

## FEATURES

### STANDARD ELECTRONIC CONTROL ON TAF MODELS

- Allows user to easily monitor defrost functions from the panel interface on the front of the merchandiser
- Audible and visual alarm
- Decreases service time and calls
- Eliminates room thermostat, defrost termination/fan delay control, defrost timer and digital thermometer or other temperature indicator

#### CONSTRUCTION

- All stainless steel finish interior and exterior
- Top mounted low profile interior evaporator housing
- Digital thermometer on TAC models (built into electronic controller interface on TAF models)
- Electric condensate evaporator
- Heavy-duty casters

- Three heavy-duty, welded wire, gray epoxy-coated shelves per section, adjustable in 1/2" increments
- 2 1/2" foamed-in-place "zero ODP" urethane insulated walls

#### DOORS

- 2" stainless steel foamed-in-place doors
- Self-closing with cylinder locks and 90° hold-open feature
- Horizontal door handles
- Self-sealing replaceable magnetic gaskets
- Lift-off doors
- Anti-condensate door frame heaters
- Light switch concealed in door hinge
- Door width:  
 TAC/TAF-27HDSA ..... 27<sup>3</sup>/<sub>4</sub>"  
 TAC/TAF-48HD/74HDSA ... 23<sup>3</sup>/<sub>8</sub>"

#### REFRIGERATION

- TAC model refrigerant: R-134a
- TAF model refrigerant: R-404A
- Top mounted, self-contained, factory tested refrigeration system
- TAF models feature auto defrost with double failsafe override

- Electric condensate evaporator
- Minimum 4" clearance required between cabinet back and wall on TAC models, minimum 6" clearance required on TAF models
- TAC model temperature range: 34° to 41°F (1° to 5°C)
- TAF model temperature range: 0° to -20°F (-18° to -29°C)
- R-factor (insulation efficiency rating): 21.55 on walls, 17.24 on doors

#### WARRANTY

- Standard limited four year extended compressor and one year limited parts and labor

## OPTIONS

- Add suffix "R" for remote system
- Legs
- Pan rack
- Additional welded wire gray epoxy shelving

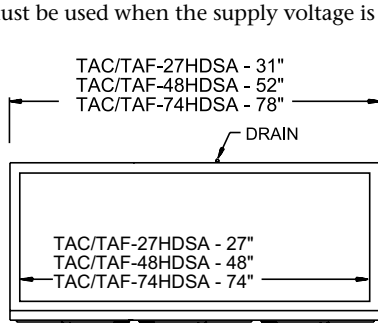


# TAC/TAF SERIES FOODSERVICE SOLID DOOR REACH-INS

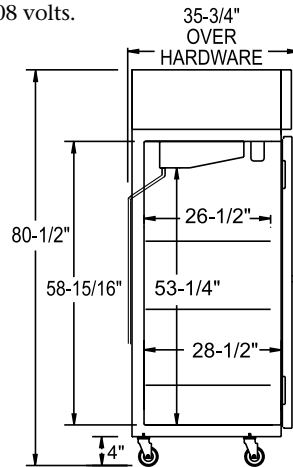
## TECHNICAL SPECIFICATIONS

MODEL	DIMENSIONS (in.)			DIMENSIONS (mm)			VOLTS**	AMPS	UNIT H.P.	NO. OF DOORS	NO. OF SHELVES	STANDARD SHELF SIZE (in inches)	CAP. CU. FT.	SHIP CU. FT.	SHIP WT. LB/KG
	L	D	H*	L	D	H*									
<b>MEDIUM TEMP</b>															
TAC-27HDSA	31	35 <sup>3</sup> / <sub>4</sub>	80 <sup>1</sup> / <sub>2</sub>	787	908	2045	115	12.1	1/2	1	3	25 <sup>1</sup> / <sub>4</sub> x 26	25.4	76.0	355/161
TAC-48HDSA	52	35 <sup>3</sup> / <sub>4</sub>	80 <sup>1</sup> / <sub>2</sub>	1321	908	2045	115	13.1	1/2	2	6	22 <sup>1</sup> / <sub>2</sub> x 26	45.9	119.0	465/211
TAC-74HDSA	78	35 <sup>3</sup> / <sub>4</sub>	80 <sup>1</sup> / <sub>2</sub>	1981	908	2045	115	15.0	3/4	3	9	22 <sup>1</sup> / <sub>2</sub> x 26	71.4	174.0	650/295
<b>LOW TEMP</b>															
TAF-27HDSA	31	35 <sup>3</sup> / <sub>4</sub>	80 <sup>1</sup> / <sub>2</sub>	787	908	2045	115	10.5	3/4	1	3	25 <sup>1</sup> / <sub>4</sub> x 26	25.4	76.0	385/175
TAF-48HDSA	52	35 <sup>3</sup> / <sub>4</sub>	80 <sup>1</sup> / <sub>2</sub>	1321	908	2045	115/208-230	5.0/7.5	1	2	6	22 <sup>1</sup> / <sub>2</sub> x 26	45.9	119.0	540/245
TAF-74HDSA	78	35 <sup>3</sup> / <sub>4</sub>	80 <sup>1</sup> / <sub>2</sub>	1981	908	2045	115/208-230	6.2/11.2	1 <sup>1</sup> / <sub>2</sub>	3	9	22 <sup>1</sup> / <sub>2</sub> x 26	71.4	174.0	670/305

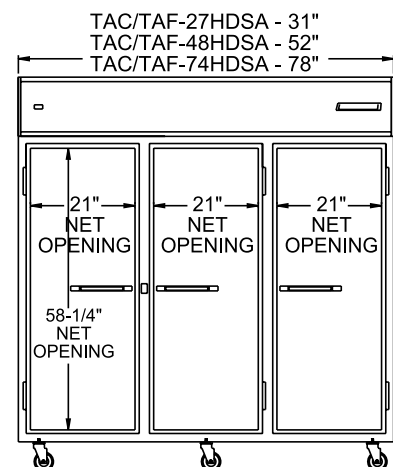
\*Height includes casters. \*\*TAF-48HDSA and TAF-74HDSA operate on a minimum of 208 volts. A voltage boosting transformer (part no. 39-01087) must be used when the supply voltage is less than 208 volts.



PLAN VIEW



SIDE VIEW



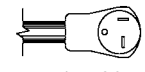
ELEVATION VIEW

## LISTINGS



## HOOKUP

TAC MODELS: Via plug in, 8 foot long, flexible 3 wire 14/3 cord with molded plug. 20 amp service is required for all models.  
 TAF-27HDSA: Via plug in, 8 foot long, flexible 3 wire 14/3 cord with molded plug. 15 amp service is recommended.  
 TAF-48HDSA: Hardwired  
 TAF-74HDSA: Hardwired with separate junction boxes for 115V and 208-230V and with a maximum 20 amp fuse.



NEMA 5-20P (TAC MODELS & TAF-27HDSA)

## BID SPECIFICATIONS

Item no. TAC-\_\_\_\_HDSA and/or Item no. TAF-\_\_\_\_HDSA.

Provide \_\_\_\_\_ ( ) Medium Temp Foodservice Solid Door Reach-in(s), and/or \_\_\_\_\_ ( ) Low Temp Foodservice Solid Door Reach-In(s). Master-Bilt model no(s). TAC-\_\_\_\_HDSA and/or TAF-\_\_\_\_HDSA.

Cabinet to be constructed of stainless steel interior and exterior. TAF models will be equipped with an electronically controlled

monitoring system as well as an automatic defrost with double failsafe override.

All models to have digital thermometer (built into electronic controller interface on TAF models), electric condensate evaporator, heavy-duty casters, three welded wire, gray epoxy-coated shelves per section. Doors will be self-closing with 90° hold-open feature, locking horizontal handles and door frame heater.

The refrigeration system will be top mounted and self-contained using R-134a refrigerant in TAC models and R-404A in TAF models. The temperature range will be 34° to 41°F (1° to 5°C) for TAC models and 0° to -20°F (-18° to -29°C) for TAF models.

Cabinet to have standard limited 4 year extended compressor warranty and 1 year limited parts and labor warranty. Cabinet to be UL, C-UL and NSF listed.

**NOTE:** Cabinet designed for optimum performance in air-conditioned area at 75°F ambient and 55% relative humidity. All specifications subject to change without notice.



908 Highway 15 North • New Albany, MS 38652  
 PHONE: 800-647-1284 or 662-534-9061 • FAX: 800-232-3966 or 662-534-6049 • www.master-bilt.com

