

BHC SERIES

Bottom Mounted Ice Cream Hardening And Holding Cabinets

Refrigeration system features low maintenance bare tube condenser coil.

MODELS

- BHC-27
- BHC-27E
- BHC-48E

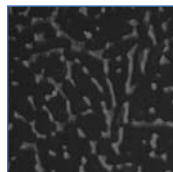
BHC-27/
BHC-27E

FEATURES

NEW STANDARD TEXTURED FINISH



Standard white



Black also available

CONSTRUCTION

- Standard electronic controller with these features:
 - Ability to monitor defrost functions from the front panel interface
 - Audible and visual alarm
 - Eliminates room thermostat, defrost termination/fan delay control, defrost timer and digital thermometer or other temperature indicator
- Digital thermometer
- 24 gauge painted textured galvanized steel interior and exterior

- 4 heavy-duty welded wire white epoxy-coated shelves per section
- 2" foamed-in-place "zero ODP" urethane insulation

DOORS

- Door swing:
 - BHC-27/BHC-27E.....hinged left
 - BHC-48E.....left door hinged left, right door hinged right
- Self-closing doors with 90° hold-open feature
- Sure-sealing magnetic gaskets (replaceable)
- Heavy-duty horizontal door handle
- Anti-condensate door frame heater
- 2" thick white galvanized steel foamed-in-place doors
- Lift-off doors

REFRIGERATION

- Refrigerant: R-404A
- Self-contained, bottom mounted, hermetic refrigeration system
- Minimum 4" clearance required between cabinet back and wall

- Temperature range: 15° to -20°F (9° to -29°C)
- R-factor (insulation efficiency rating): 17.24 on walls and doors

WARRANTY

- Standard limited three year extended compressor and two year limited parts and labor

OPTIONS

- Add suffix "R" for remote system on BHC-48 only
- Custom exterior colors
- Casters
- Legs
- Additional shelves
- Additional shelf clips
- Voltage boosting transformer



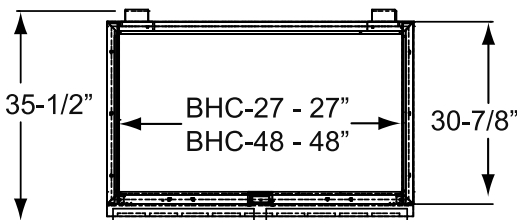
BHC SERIES

BOTTOM MOUNTED ICE CREAM HARDENING AND HOLDING CABINETS

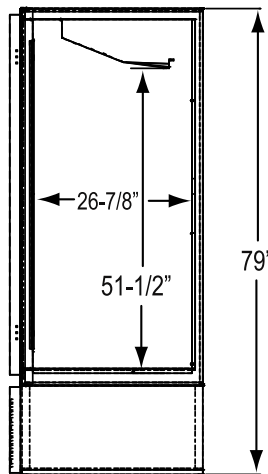
TECHNICAL SPECIFICATIONS

MODEL	DIMENSIONS (in.)			DIMENSIONS (mm)			VOLTS*	AMPS	UNIT H.P.	NO. OF SHELVES	STANDARD SHELF SIZE (in inches)	USABLE INTERIOR CAP. CU. FT.	CAP. 3 GAL. CANS	SHIP CU. FT.	SHIP WT. LB/KG
	L	D	H	L	D	H									
BHC-27	31	36 1/2	79	787	927	2007	115	12.0	3/4	4	22 x 23	20.5	24	79.0	630/286
BHC-27E**	31	36 1/2	79	787	927	2007	230**	6.0	3/4	4	22 x 23	20.5	24	79.0	630/286
BHC-48E**	52	36 1/2	79	1321	927	2007	230**	9.0	2	8	22 x 23	36.5	48	117.0	880/400

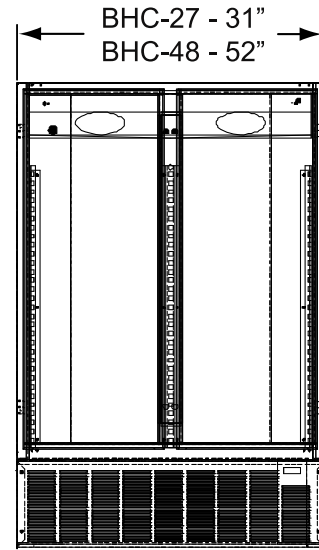
*BHC models operate on a minimum of 208 volts. A voltage boosting transformer (part no. 39-01087) must be used when the supply voltage is less than 208 volts. **230 volt models operate on 208-230/60/1 and also on 220/50/1.



PLAN VIEW



SIDE VIEW



ELEVATION VIEW

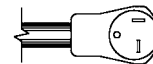
LISTINGS



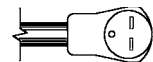
HOOKUP

BHC-27: Via plug in, 9 foot long flexible three wire 14/3 cord with molded plug.

Other models: Via plug in, 9 foot long flexible three wire 14/3 cord with molded plug.



NEMA 5-20P (BHC-27)



NEMA 6-15P (BHC-27E and BHC-48E)

BID SPECIFICATIONS

Item no. BHC-_____
Provide _____ () Ice Cream Hardening and Holding Cabinet(s), Master-Bilt model no. BHC-_____.

Cabinet will feature textured finish on interior and exterior and will be equipped with an electronically controlled monitoring system. It will also be provided with four welded wire, white epoxy-coated

shelves and white finish on interior and exterior. Cabinet also to have 2" thick foamed-in-place "zero ODP" urethane insulated walls and 2" thick, self-closing, foamed-in-place doors.

The refrigeration system is to be bottom mounted, self-contained and use R-404A refrigerant. System will also be equipped with a low-maintenance bare tube condenser

coil. The temperature range will be 15° to -20°F (9° to -29°C).

Cabinet to have standard limited three year extended compressor warranty and two year limited parts and labor warranty.

Cabinet to be UL and C-UL listed and UL EPH classified.

NOTE: Cabinet designed for optimum performance in air-conditioned area at 75°F ambient and 55% relative humidity. All specifications subject to change without notice.



908 Highway 15 North • New Albany, MS 38652
PHONE: 800-647-1284 or 662-534-9061 • FAX: 800-232-3966 or 662-534-6049 • www.master-bilt.com

