



BSG-48



## BSG SERIES

### Bottom Mounted Medium Temp Sliding Glass Door Merchandisers

#### MODELS

- BSG-48
- BSG-74



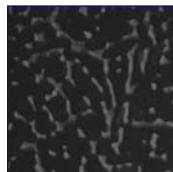
These ENERGY STAR<sup>®</sup> qualified models feature highly efficient compressors, generously-sized condensers and evaporators and EC evaporator motors. They may also qualify for energy rebate programs.

## FEATURES

### NEW STANDARD TEXTURED FINISH



Standard white



Black also available

#### CONSTRUCTION

- 24 gauge painted textured steel interior and exterior
- Cord and plug standard on all self-contained models
- Five white epoxy-coated, heavy-duty, welded wire shelves with price tag molding per door (four cantilever and one bottom)
- Cantilever shelves are two-position and adjustable in 1" increments

- Equipped with T8 lamps and electronic ballasts
- Independent on/off light switch
- 2" foamed-in-place "zero ODP" urethane insulation

#### DOORS

- Flush mount doors
- Self-closing
- Stainless steel roller tracks
- Black door rails and handles
- Door easily adjustable for closing tension and leveling

#### REFRIGERATION

- Self-contained, factory tested, bottom mounted refrigeration system
- Top mounted low profile interior fan housing
- Automatic condensate evaporator
- Refrigerant: R-134a
- Minimum 4" clearance required between cabinet back and wall

- Temperature range: 34° to 41°F (1° to 5°C)
- R-factor (insulation efficiency rating): 17.24

#### WARRANTY

- Standard limited three year extended compressor and two year limited parts and labor

#### OPTIONS

- Add suffix "R" for remote system
- Custom colors
- Baskets
- Casters
- Additional shelves

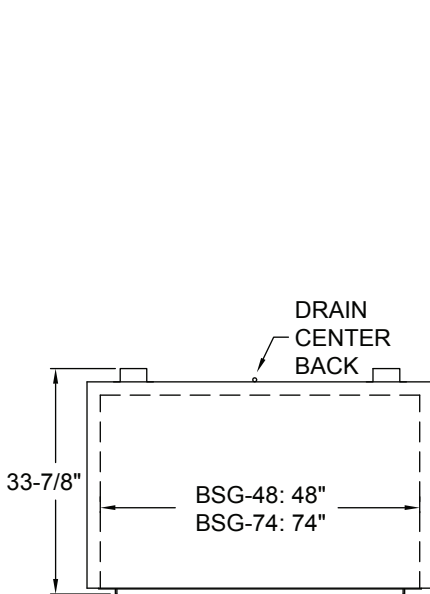


# BSG SERIES

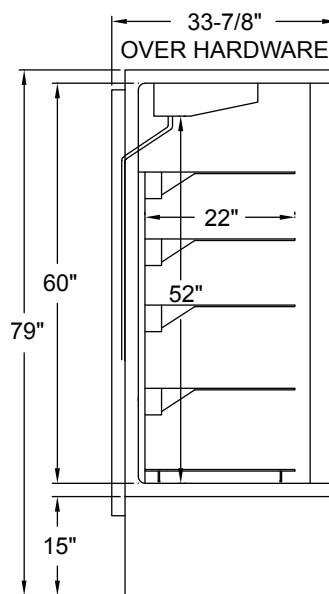
## BOTTOM MOUNTED MEDIUM TEMP SLIDING GLASS DOOR MERCHANDISERS

### TECHNICAL SPECIFICATIONS

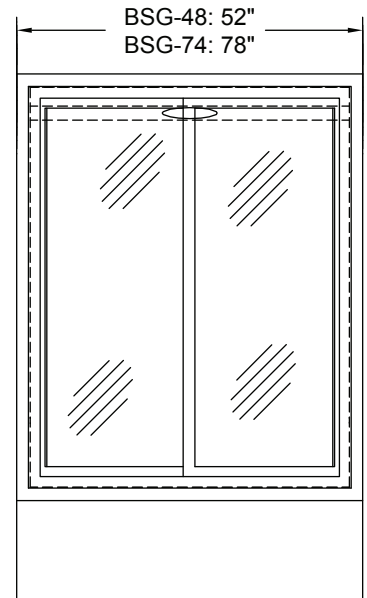
MODEL	DIMENSIONS (in.)			DIMENSIONS (mm)			VOLTS	AMPS	UNIT H.P.	NO. OF DOORS	CAP. CU. FT.	SHIP CU. FT.	SHIP WT. (LB/KG)
	L	D	H	L	D	H							
BSG-48	52	33 <sup>7</sup> / <sub>8</sub>	79	1321	860	2007	115	7.5	1/3	2	49.0	117.0	755/343
BSG-74	78	33 <sup>7</sup> / <sub>8</sub>	79	1981	860	2007	115	11.3	1/2	3	75.5	168.0	1025/466



PLAN VIEW



SIDE VIEW



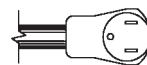
ELEVATION VIEW

### LISTINGS



### HOOKUP

Via plug in, 9 foot long, flexible three wire 14/3 cord with molded plug.



NEMA 5-15P

### BID SPECIFICATIONS

Item no. BSG- \_\_\_\_\_ .  
Provide \_\_\_\_\_ ( )  
Bottom Mounted Medium Temp Sliding Glass Door Merchandiser(s), Master-Bilt model no. BSG-\_\_\_\_ .

Merchandiser will feature textured finish on interior and exterior and will be provided with top mounted low profile interior fan housing, automatic conden-

sate evaporator, T8 bulbs, independent on/off light switch and black door rails and handles. Merchandiser also to be equipped with five white epoxy-coated shelves (four cantilever and one bottom) with price tag molding per door.

The refrigeration system is to be bottom mounted, self-contained and use R-134a refrigerant. The temperature range will be

34° to 41°F (1° to 5°C).

Merchandiser to have standard limited three year extended compressor warranty and two year limited parts and labor warranty.

Merchandiser to be UL, C-UL and NSF listed as well as ENERGY STAR qualified.

**NOTE: Cabinet designed for optimum performance in air-conditioned area at 75°F ambient and 55% relative humidity. All specifications subject to change without notice.**



908 Highway 15 North • New Albany, MS 38652  
PHONE: 800-647-1284 or 662-534-9061 • FAX: 800-232-3966 or 662-534-6049 • www.master-bilt.com

