

Refrigerated Service Case (Food-service)

- | | |
|--------------------------------------|---------------------------------|
| <input type="checkbox"/> FSDG48R.T1 | 50 3/4"L x 42 3/4"D x 54 3/8"H |
| <input type="checkbox"/> FSDG72R.T1 | 75 1/8"L x 42 3/4"D x 54 3/8"H |
| <input type="checkbox"/> FSDG96R.T1 | 99 1/2"L x 42 3/4"D x 54 3/8"H |
| <input type="checkbox"/> FSDG144R.T1 | 148 1/4"L x 42 3/4"D x 54 3/8"H |

STANDARD FEATURES

- Exterior-Stainless steel rear exterior
- Light-T-8 top, shelf & nose lights
- Warranty-One year parts & labor; 1-5 year compressor warranty
- Evaporator pan-Electric condensate pan (self-contained refig. only)
- Temp-Integrated average product temperature of 41°F
- Compressor air-Compressor air intake from rear and out front panel at toe kick. Front panel cannot be blocked.
- Lower front-Flat front panel



MODEL SHOWN: FSDG96R.T1

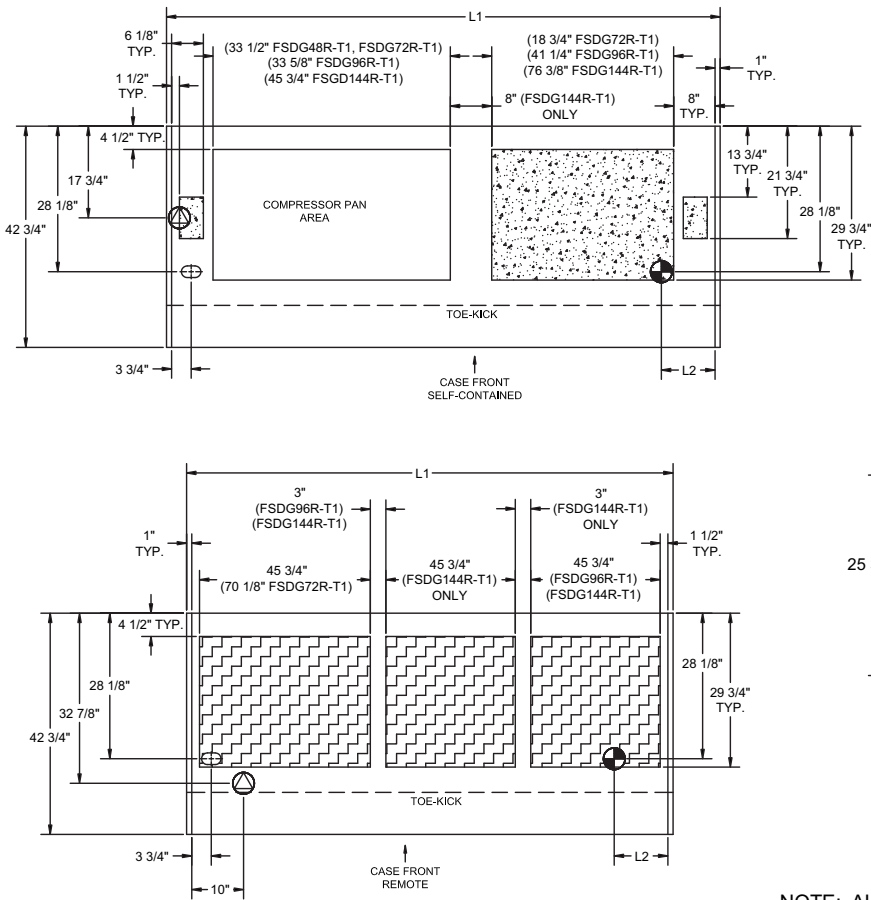
	STANDARD SPECIFICATION	OPTION(s)
ELECTRICAL CONNECT	<input type="checkbox"/> 6 ft straight blade power cord (self cont.)	<input type="checkbox"/> 6 ft locking power cord (self cont.) <input type="checkbox"/> Electrical leads (remote)
FAN MOTORS	<input type="checkbox"/> Standard evaporator fans	<input type="checkbox"/> Energy efficient evaporator fans
LOWER FRONT PANEL COLOR	<input type="checkbox"/> Black exterior	<input type="checkbox"/> Stainless steel exterior
MISCELLANEOUS	<input type="checkbox"/> None	<input type="checkbox"/> Clean Sweep® coil cleaner (n/a w/remote)
SCALE STAND	<input type="checkbox"/> None	<input type="checkbox"/> Top mount scale stand w/receptacle (requires separate circuit) (specify side)
INTERIOR COLOR	<input type="checkbox"/> Black interior	<input type="checkbox"/> White interior <input type="checkbox"/> Stainless Steel interior
TRIM COLOR	<input type="checkbox"/> Black trim	<input type="checkbox"/> Silver trim
EXTERIOR COLOR	<input type="checkbox"/> Laminated exterior (Wilsonart/Formica non-premium)	<input type="checkbox"/> Maple veneer exterior (stained) <input type="checkbox"/> Oak veneer exterior (stained) <input type="checkbox"/> Oak veneer exterior (clear sealer) <input type="checkbox"/> Stainless steel exterior <input type="checkbox"/> Laminated exterior (Wilsonart/Formica premium)
REFRIGERATION	<input type="checkbox"/> Breeze™ refrigeration	<input type="checkbox"/> Note: Remote doesn't incl Conds unit. Floor drain reqd. <input type="checkbox"/> Remote w/thermostat, solenoid & TXV
BASE SUPPORT	<input type="checkbox"/> Levelers	<input type="checkbox"/> 6"H legs <input type="checkbox"/> Casters
TOE KICK	<input type="checkbox"/> Toe kick, black	<input type="checkbox"/> Toe kick, stainless steel
END PANEL LEFT	<input type="checkbox"/> Full end panel w/mirror interior (No mirror w/ss ext)	<input type="checkbox"/> No end panel (for same case to case connections) <input type="checkbox"/> Cutaway end panel <input type="checkbox"/> Case to case glass end
END PANEL RIGHT	<input type="checkbox"/> Full end panel w/mirror interior (No mirror w/ss ext)	<input type="checkbox"/> No end panel (for same case to case connections) <input type="checkbox"/> Cutaway end panel <input type="checkbox"/> Case to case glass end
REAR WRAPPING BOARD	<input type="checkbox"/> None	<input type="checkbox"/> Rear wrapping board
FRONT GLASS	<input type="checkbox"/> Curved single pane, lift-up front glass w/o lock	<input type="checkbox"/> Curved single pane, lift-up front glass w/lock <input type="checkbox"/> Straight single pane, lift-up front glass w/o lock <input type="checkbox"/> Straight single pane, lift-up front glass w/lock
UPPER REAR	<input type="checkbox"/> Clear glass rear sliding doors w/o lock	<input type="checkbox"/> Clear glass rear sliding doors w/lock <input type="checkbox"/> Reflective glass rear sliding doors w/lock <input type="checkbox"/> Reflective glass rear sliding doors w/o lock
SHELVING	<input type="checkbox"/> Solid shelf, lighted (T-8)	<input type="checkbox"/> 3"H Full depth display riser(s) (n/a w/shelf) <input type="checkbox"/> Angled display steps
BUMPER	<input type="checkbox"/> None	<input type="checkbox"/> 1" bumper on front (specify color)

FUSION

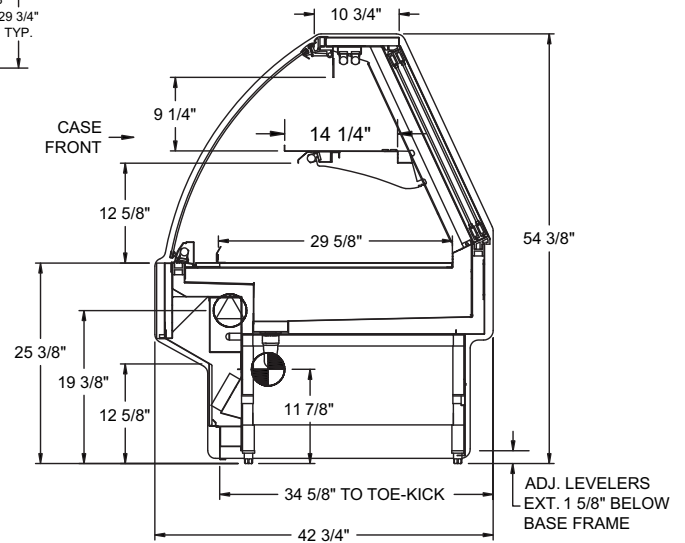
PRODUCT SPECIFICATIONS

Intended Use of Display Area: Unpackaged refrigerated products
 Integrated Product Temperature (IPT): 41°F
 Intended Environment: Designed to operate in ambient conditions of 75°F / 55% relative humidity.





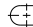

PLAN VIEW



SIDE VIEW



NOTE: ALL DIMENSIONS APPROXIMATE

-  ELECTRICAL JUNCTION BOX (SUPPLIED WITH 6" LEADS OR POWER CORD).
-  REMOTE CASE SERVICE ACCESS AREA.
-  LOCATION OF CONDENSATE DRAIN TUBE (SUPPLIED WITH 3/4" OR 1 1/2" PVC DRAIN TUBE).
-  SELF-CONTAINED CASE SERVICE ACCESS AREA.
-  REFRIGERATION LINE CONNECTION.
-  DRY CASE SERVICE ACCESS AREA.

Model	Self-Contained Refrigeration/Dry					Remote Refrigeration w/Leads			Ship Wt	Frt CIs
	L1*	L2*	Volts++	Amps	NEMA Plug	Volts++	Amps***	BTUH		
FSDG48R.T1	50 3/4	10 3/8	220/1/60**	13.98	NEMA 14-20P	120/1/60	2.16	3053	950	110
FSDG72R.T1	75 1/8	10 3/8	220/1/60**	15.46	NEMA 14-20P	120/1/60	3.06	3217	1150	110
FSDG96R.T1	99 1/2	10 3/8	220/1/60**	16.22	NEMA 14-20P	120/1/60	4.99	3792	1450	110
FSDG144R.T1	148 1/4	10 3/8	220/1/60**	19.85	NEMA 14-30P	120/1/60	7.25	7888	2150	110

++ Operating range for 120 volt rating is 110-120 volts; operating range for 220 volt rating is 208-230 volts.

** Requires 3 wires + ground

*** Does not include electric defrost on freezer models

REGULATORY APPROVALS

- ETL Listed Certified to CAN/CSA 22.2
- ETL Listed Conforms to UL 471
- ETL Sanitation Conforms to NSF 7



Note: Information is subject to change at any time.

888 E. Porter Rd. Muskegon, MI 49441 Phone: 231.798.8888 Fax: 231.798.4960 www.structuralconcepts.com