

Combination Prep/Refrigerated Self-Service Case (with Rear Storage)

- FSP4842R.T1 51 3/4"L x 50 5/8"D x 42 7/8"H
- FSP7242R.T1 75 1/8"L x 50 5/8"D x 42 7/8"H
- FSP9642R.T1 99 1/2"L x 50 5/8"D x 42 7/8"H



MODEL SHOWN FSP7242R.T1

NOTE: INTERIOR PANS NOT PROVIDED W/CASE
 FSP4842R.T1 HOLDS (2) FULL SIZE 4"D PANS - FSP7242R.T1 = (3) - FSP9642R.T1 = (4)

STANDARD FEATURES

- Exterior-Stainless steel rear exterior
- Light-T-8 top & nose lights
- Temp-Integrated average product temperature of 41°F
- Shelves-Shelving removable and adjustable on 1" centers
- Warranty-One year parts & labor; 1-5 year compressor warranty
- Compressor air-Compressor air intake from rear and out front panel at toe kick. Front panel cannot be blocked.
- Pans-Condiment pan support rails

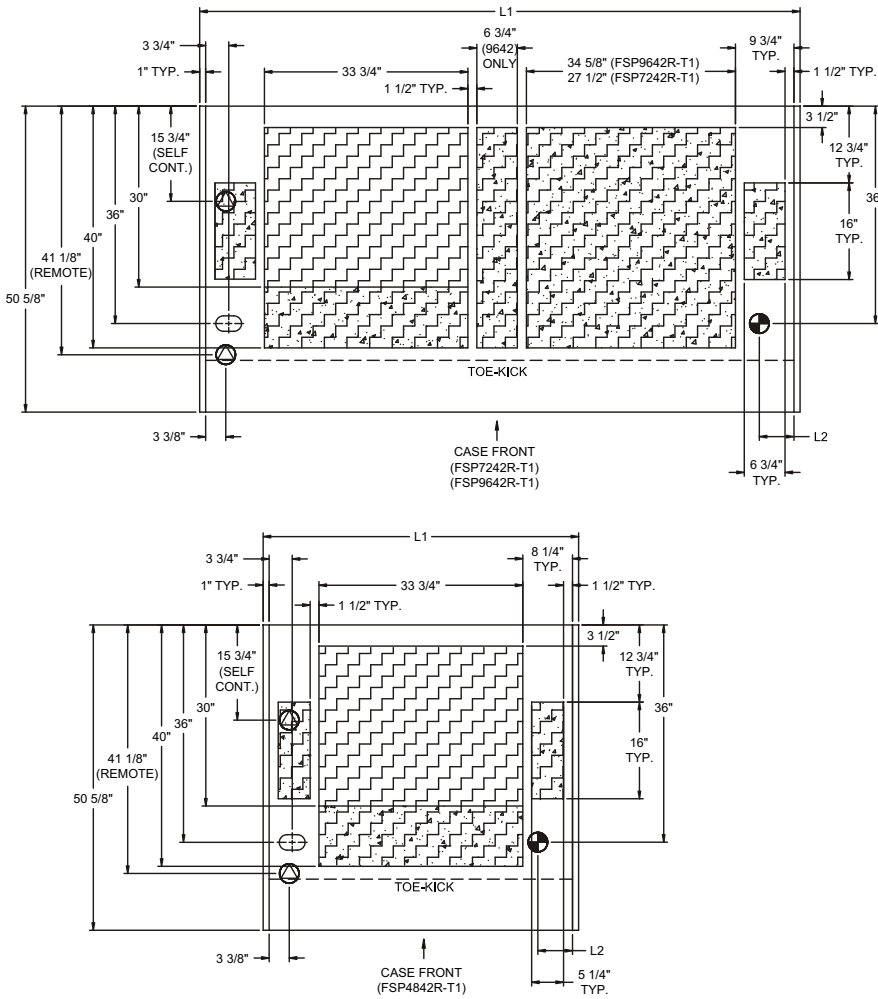
	STANDARD SPECIFICATION	OPTION(S)
ELECTRICAL CONNECT	<input type="checkbox"/> 6 ft straight blade power cord (self cont.)	<input type="checkbox"/> 6 ft locking power cord (self cont.) <input type="checkbox"/> Electrical leads (remote)
FAN MOTORS	<input type="checkbox"/> Standard evaporator fans	<input type="checkbox"/> Energy efficient evaporator fans
LOWER FRONT PANEL COLOR	<input type="checkbox"/> Black exterior	<input type="checkbox"/> Stainless steel exterior
MISCELLANEOUS	<input type="checkbox"/> None	<input type="checkbox"/> Clean Sweep® coil cleaner (n/a w/remote)
INTERIOR COLOR	<input type="checkbox"/> Black interior	<input type="checkbox"/> Stainless Steel interior <input type="checkbox"/> White interior
EXTERIOR COLOR	<input type="checkbox"/> Laminated exterior (Wilsonart/Formica non-premium)	<input type="checkbox"/> Stainless steel exterior <input type="checkbox"/> Laminated exterior (Wilsonart/Formica premium) <input type="checkbox"/> Maple veneer exterior (stained) <input type="checkbox"/> Oak veneer exterior (clear sealer) <input type="checkbox"/> Oak veneer exterior (stained)
COVER/CURTAIN	<input type="checkbox"/> None	<input type="checkbox"/> Night curtain, retractable, non-locking <input type="checkbox"/> Wire security cover, removable, locking
REFRIGERATION	<input type="checkbox"/> Breeze™ refrigeration <input type="checkbox"/> Remote w/TXV (nom 8ft L only)	<input type="checkbox"/> Note: Remote doesn't incl Conds unit. Floor drain reqd. <input type="checkbox"/> Remote w/thermostat, solenoid & TXV
BASE SUPPORT	<input type="checkbox"/> Levelers	<input type="checkbox"/> 6"H legs <input type="checkbox"/> Casters
TOE KICK	<input type="checkbox"/> Toe kick, black	<input type="checkbox"/> Toe kick, stainless steel
END PANEL LEFT	<input type="checkbox"/> Full end panel w/mirror interior (No mirror w/ss ext)	<input type="checkbox"/> No end panel (for same case to case connections) <input type="checkbox"/> Case to case glass end
END PANEL RIGHT	<input type="checkbox"/> Full end panel w/mirror interior (No mirror w/ss ext)	<input type="checkbox"/> No end panel (for same case to case connections) <input type="checkbox"/> Case to case glass end
REAR WORK LEDGE	<input type="checkbox"/> Rear wrapping board, white Sanalite®	<input type="checkbox"/> Rear ledge, Richlite® (specify color) <input type="checkbox"/> Rear wrapping board, stainless steel
REAR STORAGE	<input type="checkbox"/> Non-refrigerated rear storage (w/o doors)	<input type="checkbox"/> Non-refrigerated rear storage (w/doors) <input type="checkbox"/> Refrigerated rear storage (w/doors)
SHELVING	<input type="checkbox"/> Solid shelf, non-lighted	<input type="checkbox"/> Additional solid shelf, non-lighted
SNEEZE GUARD	<input type="checkbox"/> Sneeze guard posts (specify black or silver)	<input type="checkbox"/> None
BUMPER	<input type="checkbox"/> None	<input type="checkbox"/> 1" bumper on front (specify color) <input type="checkbox"/> 1" bumper on front & right end (specify color) <input type="checkbox"/> 1" bumper on front & left end (specify color) <input type="checkbox"/> 1" bumper on front & ends (specify color)

FUSION

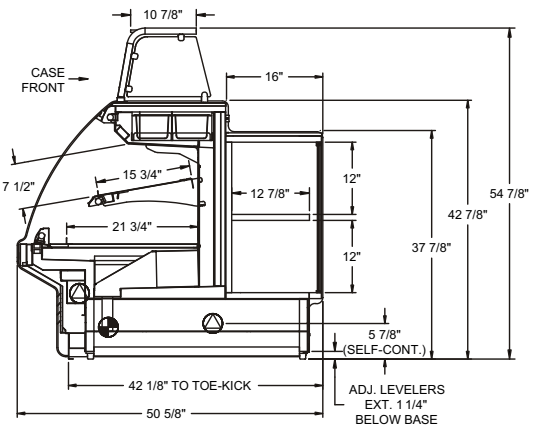
PRODUCT SPECIFICATIONS

Intended Use of Display Area: Packaged refrigerated products
 Integrated Product Temperature (IPT): 41°F
 Intended Environment: Designed to operate in ambient conditions of 75°F / 55% relative humidity.

PLAN VIEW



SIDE VIEW



NOTE: ALL DIMENSIONS APPROXIMATE

- ELECTRICAL JUNCTION BOX (SUPPLIED WITH 6\"/>
- LOCATION OF CONDENSATE DRAIN TUBE (SUPPLIED WITH 3/4\"/>
- REFRIGERATION LINE CONNECTION.
- REMOTE CASE SERVICE ACCESS AREA.
- SELF-CONTAINED CASE SERVICE ACCESS AREA.
- DRY CASE SERVICE ACCESS AREA.

Model	Self-Contained Refrigeration/Dry					Remote Refrigeration w/Leads			Ship Wt	Frt CIs
	L1*	L2*	Volts++	Amps	NEMA Plug	Volts++	Amps***	BTUH		
FSP4842R.T1	51 3/4	5 3/4	120/1/60	22.79	NEMA 5-30P	120/1/60	3.29	3870	980	110
FSP7242R.T1	75 1/8	5 3/4	220/1/60**	16.14	NEMA 14-20P	120/1/60	3.93	5805	1320	110
FSP9642R.T1	99 1/2	5 3/4	N/A	0	N/A	120/1/60	4.45	7203	1900	110

++ Operating range for 120 volt rating is 110-120 volts; operating range for 220 volt rating is 208-230 volts.
 ** Requires 3 wires + ground
 *** Does not include electric defrost on freezer models

REGULATORY APPROVALS

- ETL Listed Certified to CAN/CSA 22.2
- ETL Listed Conforms to UL 471
- ETL Sanitation Conforms to NSF 7



Note: Information is subject to change at any time.
 888 E. Porter Rd. Muskegon, MI 49441 Phone: 231.798.8888 Fax: 231.798.4960 www.structuralconcepts.com