

Hot Service Case (Food-service)



MODEL SHOWN: FSDG48W.T1

NOTE: INTERIOR PANS NOT PROVIDED W/CASE - FSDG48W.T1 HOLDS (3) FULL & (3) 1/3 SIZE 4"D PANS - FSDG72W.T1 = (5) FULL & (5) 1/3 SIZE - FSDG96W.T1 = (7) FULL & (7) ONE-THIRD SIZE

- FSDG48W.T1 50 3/4"L x 42 3/4"D x 54 3/8"H
- FSDG72W.T1 75 1/8"L x 42 3/4"D x 54 3/8"H
- FSDG96W.T1 99 1/2"L x 42 3/4"D x 54 3/8"H

STANDARD FEATURES

- Bulbs-Incandescent bulbs
- Exterior-Stainless steel rear exterior
- Heat-Infrared overhead heat (individually controlled)
- Heat-Independently heated wells controlled by thermostat
- Heat-Designed for dry heat
- Temp-Integrated average product temperature of 160°F
- Interior-Stainless Steel interior
- Warranty-One year parts & labor warranty
- Pans-Each well accommodates up to 4"D pans

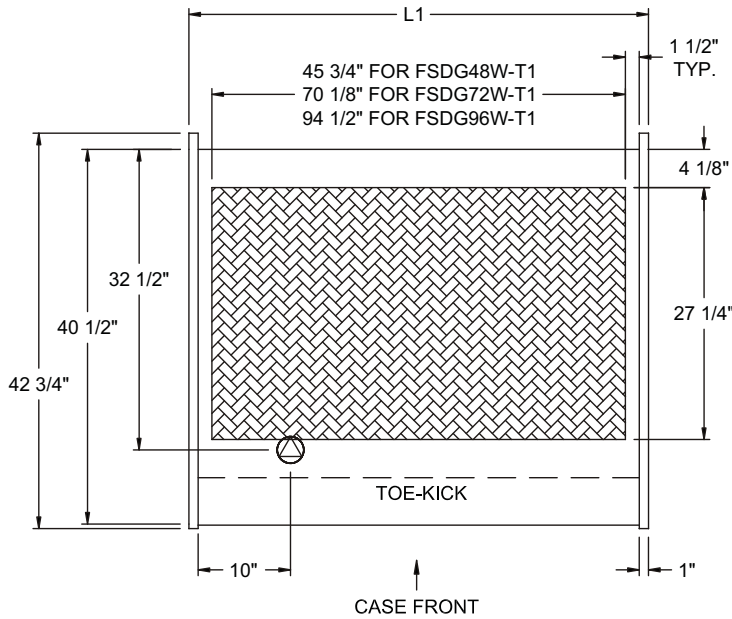
	STANDARD SPECIFICATION	OPTION(S)
CONTROL KNOB GUARDS	<input type="checkbox"/> None	<input type="checkbox"/> Control knob guards
ELECTRICAL CONNECT	<input type="checkbox"/> Electrical leads	<input type="checkbox"/> 6 ft straight blade power cord
LOWER FRONT PANEL COLOR	<input type="checkbox"/> Black exterior	<input type="checkbox"/> Stainless steel exterior
TRIM COLOR	<input type="checkbox"/> Black trim	<input type="checkbox"/> Silver trim
EXTERIOR COLOR	<input type="checkbox"/> Laminated exterior (Wilsonart/Formica non-premium)	<input type="checkbox"/> Stainless steel exterior <input type="checkbox"/> Laminated exterior (Wilsonart/Formica premium)
BASE SUPPORT	<input type="checkbox"/> Levelers	<input type="checkbox"/> 6"H legs <input type="checkbox"/> Casters
TOE KICK	<input type="checkbox"/> Toe kick, black	<input type="checkbox"/> Toe kick, stainless steel
END PANEL LEFT	<input type="checkbox"/> Cutaway w/glass end panel	<input type="checkbox"/> No end panel (for same case to case connections)
END PANEL RIGHT	<input type="checkbox"/> Cutaway w/glass end panel	<input type="checkbox"/> Case to case glass end
REAR WRAPPING BOARD	<input type="checkbox"/> None	<input type="checkbox"/> Rear wrapping board
FRONT GLASS	<input type="checkbox"/> Curved single pane, lift-up front glass w/o lock	<input type="checkbox"/> Curved single pane, lift-up front glass w/lock <input type="checkbox"/> Straight single pane, lift-up front glass w/o lock <input type="checkbox"/> Straight single pane, lift-up front glass w/lock
UPPER REAR	<input type="checkbox"/> Clear glass rear sliding doors w/o lock	<input type="checkbox"/> Reflective glass rear sliding doors w/lock <input type="checkbox"/> Reflective glass rear sliding doors w/o lock <input type="checkbox"/> Clear glass rear sliding doors w/lock
SCALE	<input type="checkbox"/> None	<input type="checkbox"/> Top mount scale stand w/receptacle (requires separate circuit) (specify side)
BUMPER	<input type="checkbox"/> None	<input type="checkbox"/> 1" bumper on front (specify color)

Intended Use of Display Area: Unpackaged heated product

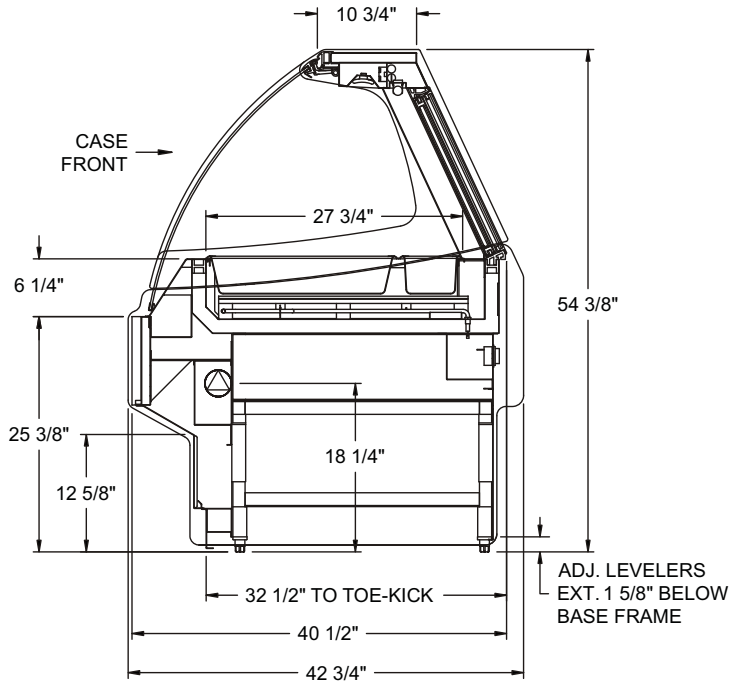
Integrated Product Temperature (IPT): 160°F

Intended Environment: Designed to operate in ambient conditions of 75°F / 55% relative humidity.

PLAN VIEW



SIDE VIEW



NOTE: ALL DIMENSIONS APPROXIMATE

- ELECTRICAL JUNCTION BOX (SUPPLIED WITH 6" LEADS OR POWER CORD).
- REMOTE CASE SERVICE ACCESS AREA.
- LOCATION OF CONDENSATE DRAIN TUBE (SUPPLIED WITH 3/4" OR 1 1/2" PVC DRAIN TUBE).
- SELF-CONTAINED CASE SERVICE ACCESS AREA.
- REFRIGERATION LINE CONNECTION.
- DRY CASE SERVICE ACCESS AREA.

Model	L1*	L2*	Heat					Nema Plug	BTUH	Ship Wt	Frt Cls
			Volts (60 Hz)	Phase	Amps	Watts	Wires				
FSDG48W.T1	50 3/4	N/A	120/208	1	17.0	3398	3+G	Leads	-	770	110
			120/240	1	19.4	4464	3+G				
			120/208	3	11.8	3398	4+G				
			120/240	3	13.4	4464	4+G				
FSDG72W.T1	75 1/8	N/A	120/208	1	28.3	5663	3+G	Leads	-	900	110
			120/240	1	32.3	7440	3+G				
			120/208	3	18.9	5663	4+G				
			120/240	3	21.8	7440	4+G				
FSDG96W.T1	99 1/2	N/A	120/208	1	39.1	7869	3+G	Leads	-	1100	110
			120/240	1	44.7	10357	3+G				
			120/208	3	25.8	7869	4+G				
			120/240	3	29.8	10357	4+G				

REGULATORY APPROVALS

■ ETL Listed Certified to CAN/CSA 22.2

■ ETL Listed Conforms to UL 197

■ ETL Sanitation Conforms to NSF 4



Note: Information is subject to change at any time.

888 E. Porter Rd. Muskegon, MI 49441 Phone: 231.798.8888 Fax: 231.798.4960 www.structuralconcepts.com