

### Combination Hot & Cold Deli Merchandiser Food-service

- |                                       |                            |
|---------------------------------------|----------------------------|
| <input type="checkbox"/> FSGUWLR48.T1 | 50 3/4"L x 52 3/4"D x 54"H |
| <input type="checkbox"/> FSGUWLR72.T1 | 75 1/8"L x 52 3/4"D x 54"H |
| <input type="checkbox"/> FSGUWLR96.T1 | 99 1/2"L x 52 3/4"D x 54"H |



NOTE: INTERIOR PANS NOT PROVIDED WITH CASE

MODEL: FSGUWLR72.T1 SHOWN

### STANDARD FEATURES

- Bulbs-Incandescent bulbs
- Exterior-Stainless steel rear exterior
- Heat-Overhead heat for each well
- Heat-Independently heated wells controlled by thermostat
- Pans-Each well accommodates up to 4"D pans with the 4 ft holding three, the 6 ft five & the 8 ft seven full & one third size pans.
- Heat-Designed for dry heat
- Light-T-8 nose light(s)
- Warranty-One year parts & labor; 1-5 year compressor warranty
- Temp-Integrated average product temperature of 160°F in hot section and 41°F or less in cold section.

	STANDARD SPECIFICATION	OPTION(s)
CONTROL KNOB GUARDS	<input type="checkbox"/> None	<input type="checkbox"/> Control knob guards
FAN MOTORS	<input type="checkbox"/> Standard evaporator fans	<input type="checkbox"/> Energy efficient evaporator fans
LOWER FRONT PANEL COLOR	<input type="checkbox"/> Black exterior	<input type="checkbox"/> White exterior <input type="checkbox"/> Painted exterior (specify color) <input type="checkbox"/> Stainless steel exterior
MISCELLANEOUS	<input type="checkbox"/> None	<input type="checkbox"/> Clean Sweep® coil cleaner
SCALE STAND	<input type="checkbox"/> None	<input type="checkbox"/> Scale stand w/receptacle (requires separate circuit)
INTERIOR COLOR	<input type="checkbox"/> Black interior	<input type="checkbox"/> White interior <input type="checkbox"/> Stainless Steel interior
TRIM COLOR	<input type="checkbox"/> Black trim	<input type="checkbox"/> Silver trim
EXTERIOR COLOR	<input type="checkbox"/> Laminated exterior (Wilsonart/Formica non-premium)	<input type="checkbox"/> Maple veneer exterior (stained) <input type="checkbox"/> Oak veneer exterior (clear coat) <input type="checkbox"/> Oak veneer exterior (stained) <input type="checkbox"/> Stainless steel exterior <input type="checkbox"/> Laminated exterior (Wilsonart/Formica premium)
COVER/CURTAIN	<input type="checkbox"/> None	<input type="checkbox"/> Night curtain, retractable, non-locking <input type="checkbox"/> Removable wire security cover, locking
REFRIGERATION	<input type="checkbox"/> Breeze™ refrigeration	<input type="checkbox"/> Note: Remote does Not include Condensing unit <input type="checkbox"/> Remote w/thermostat, solenoid & TXV
BASE SUPPORT	<input type="checkbox"/> Levelers	<input type="checkbox"/> 6"H legs
TOE KICK	<input type="checkbox"/> Toe kick, black	<input type="checkbox"/> Toe kick, stainless steel
END PANEL LEFT	<input type="checkbox"/> Cutaway end panel	<input type="checkbox"/> Case to case glass end
END PANEL RIGHT	<input type="checkbox"/> Cutaway end panel	<input type="checkbox"/> Case to case glass end
REAR WRAPPING BOARD	<input type="checkbox"/> None	<input type="checkbox"/> Rear wrapping board
FRONT GLASS	<input type="checkbox"/> Curved single pane, lift-up front glass w/o lock	<input type="checkbox"/> Curved single pane, lift-up front glass w/lock <input type="checkbox"/> Straight single pane, lift-up front glass w/lock <input type="checkbox"/> Straight single pane, lift-up front glass w/o lock
UPPER REAR	<input type="checkbox"/> Clear glass rear sliding doors w/o lock	<input type="checkbox"/> Reflective glass rear sliding doors w/lock <input type="checkbox"/> Reflective glass rear sliding doors w/o lock <input type="checkbox"/> Clear glass rear sliding doors w/lock
BUMPER	<input type="checkbox"/> None	<input type="checkbox"/> 1" bumper on front (specify color)

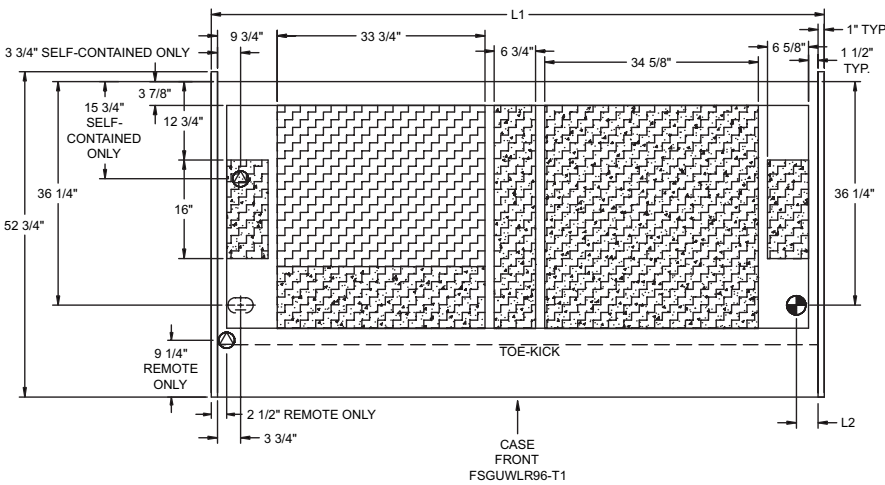
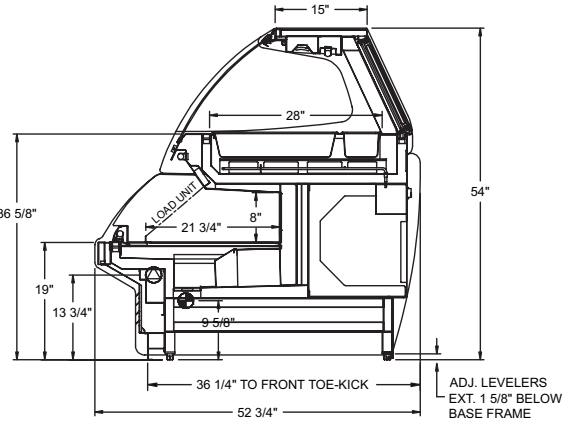
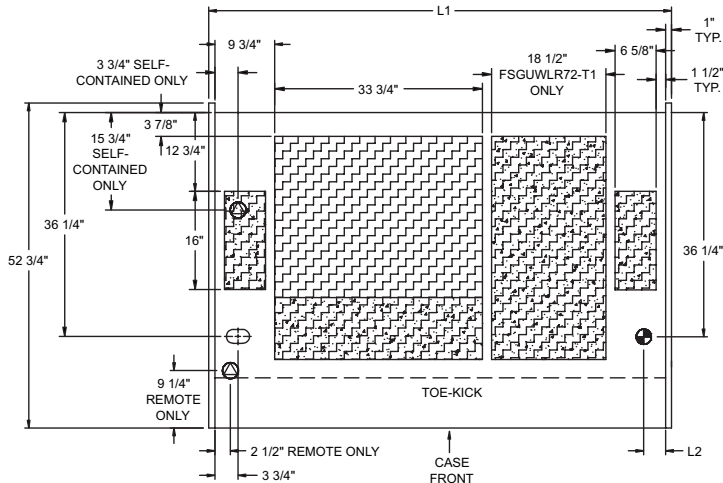
Intended Use of Display Area: Packaged/unpackaged heated products

Integrated Product Temperature (IPT): 160°F

Intended Environment: Designed to operate in ambient conditions of 75°F / 55% relative humidity.

**PLAN VIEW**

**SIDE VIEW**



**NOTE: ALL DIMENSIONS APPROXIMATE**

- ELECTRICAL JUNCTION BOX (SUPPLIED WITH 6\"/>
- LOCATION OF CONDENSATE DRAIN TUBE (SUPPLIED WITH 1/2\"/>
- REFRIGERATION LINE CONNECTION.
- REMOTE CASE SERVICE ACCESS AREA.
- SELF-CONTAINED CASE SERVICE ACCESS AREA.
- DRY CASE SERVICE ACCESS AREA.

Refrigeration/Heat													
Model	L1*	L2*	Volts (60 Hz)		Phase	Amps	Watts	Wires	Nema Plug	BTUH	Ship Wt	Fr't Cts	
FSGUWLR48.T1	50 3/4	3 1/2	Heat	Circuit 1	120/208	1	17.0	3398	3+G	Leads	2489	1020	110
					120/240	1	19.4	4464	3+G				
			Self-Contained Remote	Circuit 2	120/208	3	11.8	3398	4+G				
					120/240	3	13.4	4464	4+G				
					120	1	15.4	1848	2+G				
120	1	1.5	182	2+G									
FSGUWLR72.T1	75 1/8	3 1/2	Heat	Circuit 1	120/208	1	28.3	5663	3+G	Leads	3118	1200	110
					120/240	1	32.3	7440	3+G				
			Self-Contained Remote	Circuit 2	120/208	3	18.9	5663	4+G				
					120/240	3	21.8	7440	4+G				
					120	1	17.4	2088	2+G				
120	1	1.9	230	2+G									
FSGUWLR96.T1	99 1/2	3 1/2	Heat	Circuit 1	120/208	1	39.6	7929	3+G	Leads	3840	1900	110
					120/240	1	45.2	10417	3+G				
			Self-Contained Remote	Circuit 2	120/208	3	25.8	7929	4+G				
					120/240	3	29.8	10417	4+G				
					120	1	21.1	2532	2+G				
120	1	1.9	230	2+G									

**REGULATORY APPROVALS**

- ETL Listed Certified to CAN/CSA 22.2
- ETL Listed Conforms to UL 197
- ETL Listed Conforms to UL 471
- ETL Sanitation Conforms to NSF 4
- ETL Sanitation Conforms to NSF 7
- Rated in accordance with ARI Standard 1200

Note: Information is subject to change at any time.

888 E. Porter Rd. Muskegon, MI 49441 Phone: 231.798.8888 Fax: 231.798.4960 www.structuralconcepts.com

