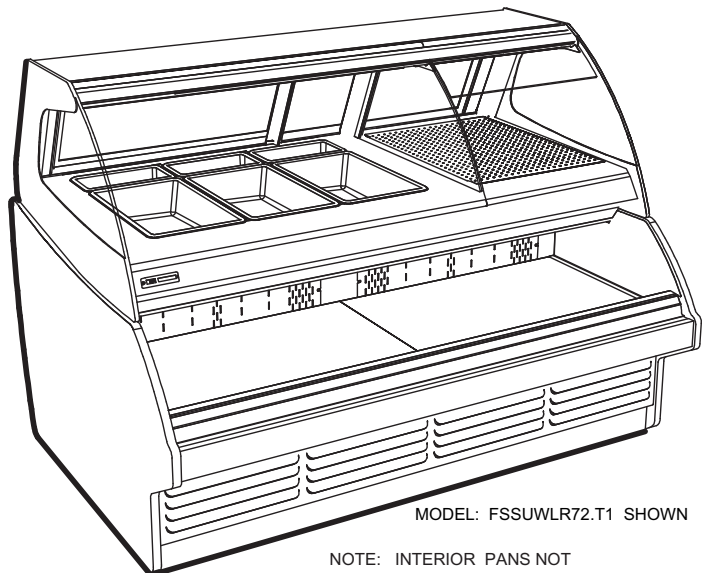


### Combination Split Hot & Cold Deli Merchandiser Food-service

FSSUWLR72.T1 75 1/8"L x 52 3/4"D x 54"H  
 FSSUWLR96.T1 99 1/2"L x 52 3/4"D x 54 "H



MODEL: FSSUWLR72.T1 SHOWN

NOTE: INTERIOR PANS NOT PROVIDED WITH CASE.

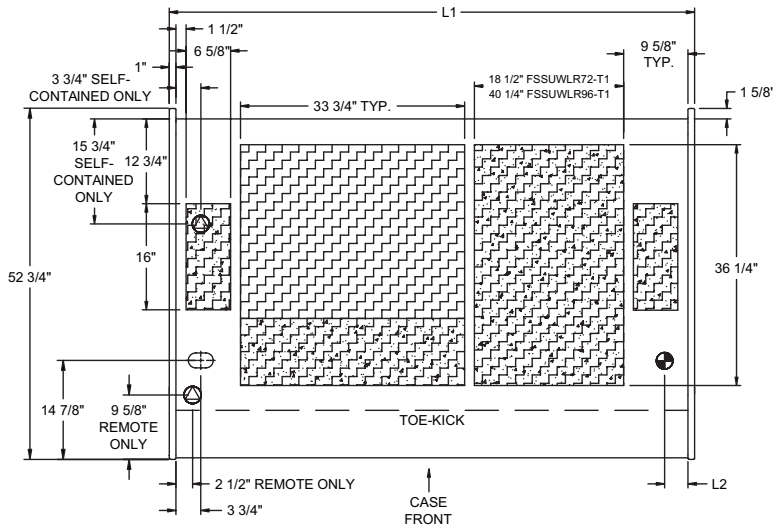
### STANDARD FEATURES

- Heat-Overhead heat for each well
- Bulbs-Halogen bulbs
- Heat-Independently heated wells controlled by thermostat
- Light-T-8 nose light(s)
- Heat-Designed for dry heat
- Warranty-One year parts & labor; 1-5 year compressor warranty
- Temp-Integrated average product temperature of 160°F in hot section and 41°F or less in cold section.
- Pans-Each well accommodates up to 4"D pans

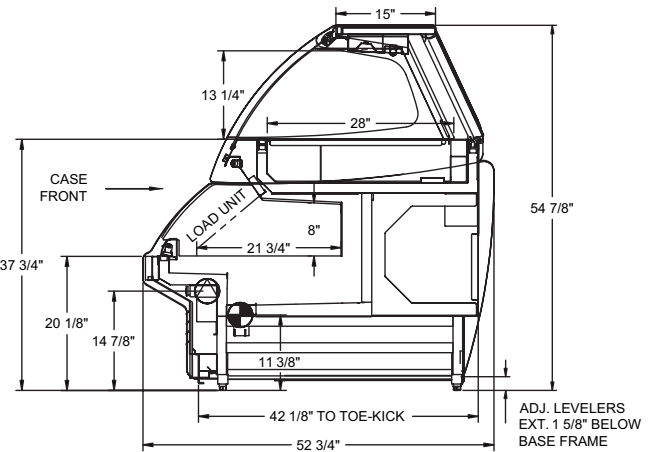
	STANDARD SPECIFICATION	OPTION(S)
CONTROL KNOB GUARDS	<input type="checkbox"/> None	<input type="checkbox"/> Control knob guards
ELECTRICAL CONNECT	<input type="checkbox"/> 6 ft straight blade power cord (self cont.)	<input type="checkbox"/> 6 ft locking power cord (self cont.) <input type="checkbox"/> Electrical leads (remote)
FAN MOTORS	<input type="checkbox"/> Standard evaporator fans	<input type="checkbox"/> Energy efficient evaporator fans
LOWER FRONT PANEL COLOR	<input type="checkbox"/> Black exterior	<input type="checkbox"/> White exterior <input type="checkbox"/> Painted exterior (specify color) <input type="checkbox"/> Stainless steel exterior
MISCELLANEOUS	<input type="checkbox"/> None	<input type="checkbox"/> Clean Sweep® coil cleaner
SCALE STAND	<input type="checkbox"/> None	<input type="checkbox"/> Scale stand w/receptacle (requires separate circuit)
INTERIOR COLOR	<input type="checkbox"/> Black interior	<input type="checkbox"/> White interior <input type="checkbox"/> Stainless Steel interior
TRIM COLOR	<input type="checkbox"/> Black trim	<input type="checkbox"/> Silver trim
EXTERIOR COLOR	<input type="checkbox"/> Laminated exterior (Wilsonart/Formica non-premium)	<input type="checkbox"/> Maple veneer exterior (stained) <input type="checkbox"/> Oak veneer exterior (clear coat) <input type="checkbox"/> Oak veneer exterior (stained) <input type="checkbox"/> Stainless steel exterior <input type="checkbox"/> Laminated exterior (Wilsonart/Formica premium)
COVER/CURTAIN	<input type="checkbox"/> None	<input type="checkbox"/> Night curtain, pull-down, non-locking <input type="checkbox"/> Removable wire security cover, locking
REFRIGERATION	<input type="checkbox"/> Breeze™ refrigeration	<input type="checkbox"/> Remote refrigeration <input type="checkbox"/> Note: Remote refrigeration does Not include Condensing unit, Controller & Solenoid valve.
BASE SUPPORT	<input type="checkbox"/> Levelers	<input type="checkbox"/> 6"H legs
TOE KICK	<input type="checkbox"/> Toe kick, black	<input type="checkbox"/> Toe kick, stainless steel
END PANEL LEFT	<input type="checkbox"/> Cutaway end panel	<input type="checkbox"/> Case to case glass end
END PANEL RIGHT	<input type="checkbox"/> Cutaway end panel	<input type="checkbox"/> Case to case glass end
REAR WRAPPING BOARD	<input type="checkbox"/> None	<input type="checkbox"/> Rear wrapping board
FRONT GLASS	<input type="checkbox"/> Curved single pane, lift-up front glass w/o lock	<input type="checkbox"/> Curved single pane, lift-up front glass w/lock <input type="checkbox"/> Straight single pane, lift-up front glass w/lock <input type="checkbox"/> Straight single pane, lift-up front glass w/o lock
UPPER REAR	<input type="checkbox"/> Clear glass rear sliding doors w/o lock	<input type="checkbox"/> Reflective glass rear sliding doors w/lock <input type="checkbox"/> Reflective glass rear sliding doors w/o lock <input type="checkbox"/> Clear glass rear sliding doors w/lock
PRICE TAG MOULDING	<input type="checkbox"/> None	<input type="checkbox"/> Price tag moulding
BUMPER	<input type="checkbox"/> None	<input type="checkbox"/> 1" bumper on front & right end (specify color) <input type="checkbox"/> 1" bumper on front & left end (specify color) <input type="checkbox"/> 1" bumper on front & ends (specify color) <input type="checkbox"/> 1" bumper on front (specify color)

Intended Use of Display Area: N/A  
 Integrated Product Temperature (IPT): N/A  
 Intended Environment: N/A

### PLAN VIEW



### SIDE VIEW



**NOTE: ALL DIMENSIONS APPROXIMATE**

- ELECTRICAL JUNCTION BOX (SUPPLIED WITH 6" LEADS OR POWER CORD).
- LOCATION OF CONDENSATE DRAIN TUBE (SUPPLIED WITH 3/4" OR 1 1/2" PVC DRAIN TUBE).
- REFRIGERATION LINE CONNECTION.
- REMOTE CASE SERVICE ACCESS AREA.
- SELF-CONTAINED CASE SERVICE ACCESS AREA.
- DRY CASE SERVICE ACCESS AREA.

Model	L1*	L2*	Volts++ (60 Hz)		Amps*** (Single Phase)	Amps*** (Three Phase)	Nema Plug	BTUH	Ship Wt	Frt Cls	
			Circuit 1	Circuit 2							
FSSUWLR72.T1	75 1/8	3 1/2	Self-Contained	Circuit 1	220	30.7	17.7	Leads	3118	1350	110
				Circuit 2	120	18.94	-				
			Remote	Circuit 1	220	27.3	15.8				
				Circuit 2	120	2.2	-				
FSSUWLR96.T1	99 1/2	3 1/2	Self-Contained	Circuit 1	220	43	24.8	Leads	3840	1550	110
				Circuit 2	120	21.7	-				
			Remote	Circuit 1	220	43	24.8				
				Circuit 2	120	2.5	-				

++Operating range for 120 volt rating is 110-120 volts; operating range for 220 volt rating is 208-230 volts.

\*\* Requires 3 wires + ground

\*\*\* Does not include electric defrost on freezer models

**REGULATORY APPROVALS**

- UL Sanitation in accordance w/ NSF Std 4
- UL/cUL Listed Std 197