

### Freezer Service Gelato Case

- G12F 47 3/4"L x 43 7/16"D x 53 3/4"H
- G18F 67 3/4"L x 43 7/16"D x 53 3/4"H
- G24F 84 3/4"L x 43 7/16"D x 53 3/4"H



MODEL SHOWN: G12F

### STANDARD FEATURES

- Light-T-8 top light(s)
- Upper front-Curved double pane, lift-up front glass w/o lock
- Temp-Integrated average product temperature of -2°F.
- Interior-Stainless Steel interior
- Price tag moulding-Price tag moulding
- Upper rear-Stainless rear ledge
- Base-Levelers

	STANDARD SPECIFICATION	OPTION(s)
DIPWELL	<input type="checkbox"/> None	<input type="checkbox"/> Dipwell, 10"
ELECTRICAL CONNECT	<input type="checkbox"/> 6 ft straight blade power cord (self cont.)	<input type="checkbox"/> 6 ft locking power cord (self cont.) <input type="checkbox"/> Electrical leads (remote)
PANS (EXTRA SET)	<input type="checkbox"/> None	<input type="checkbox"/> Gelato Stainless Steel 5 liter pans <input type="checkbox"/> Stainless Steel 1/3 food-service pans
UPPER FRONT PANEL	<input type="checkbox"/> Painted exterior (specify color)	<input type="checkbox"/> Black exterior
TRIM COLOR	<input type="checkbox"/> Black trim	<input type="checkbox"/> Silver trim
EXTERIOR COLOR	<input type="checkbox"/> Painted exterior (specify color)	
REFRIGERATION	<input type="checkbox"/> Breeze™ w/ EnergyWise refrigeration system (Floor Drain Required)	<input type="checkbox"/> Note: Remote doesn't incl Conds unit. Floor drain reqd. <input type="checkbox"/> Remote w/thermostat, solenoid & TXV <input type="checkbox"/> Remote w/TXV <input type="checkbox"/> Note: Remote refrigeration requires customer to have existing hot gas defrost system.
DEFROST	<input type="checkbox"/> Hot gas defrost <input type="checkbox"/> Note: Remote refrigeration requires customer to have existing hot gas defrost system.	
EVAPORATOR PAN	<input type="checkbox"/> None	<input type="checkbox"/> Condensate pan (self-contained refig. only)
END PANEL LEFT	<input type="checkbox"/> Full end panel w/mirror interior	<input type="checkbox"/> Cutaway end panel
END PANEL RIGHT	<input type="checkbox"/> Full end panel w/mirror interior	<input type="checkbox"/> Cutaway end panel
PANS	<input type="checkbox"/> Gelato Stainless Steel 5 liter pans	<input type="checkbox"/> Stainless Steel 1/3 food-service pans
UPPER REAR	<input type="checkbox"/> Open upper rear	<input type="checkbox"/> Night curtain, retractable, non-locking <input type="checkbox"/> Clear glass rear sliding doors w/o lock
BUMPER	<input type="checkbox"/> None	<input type="checkbox"/> 1" bumper on front (specify color)

# ENCORE®

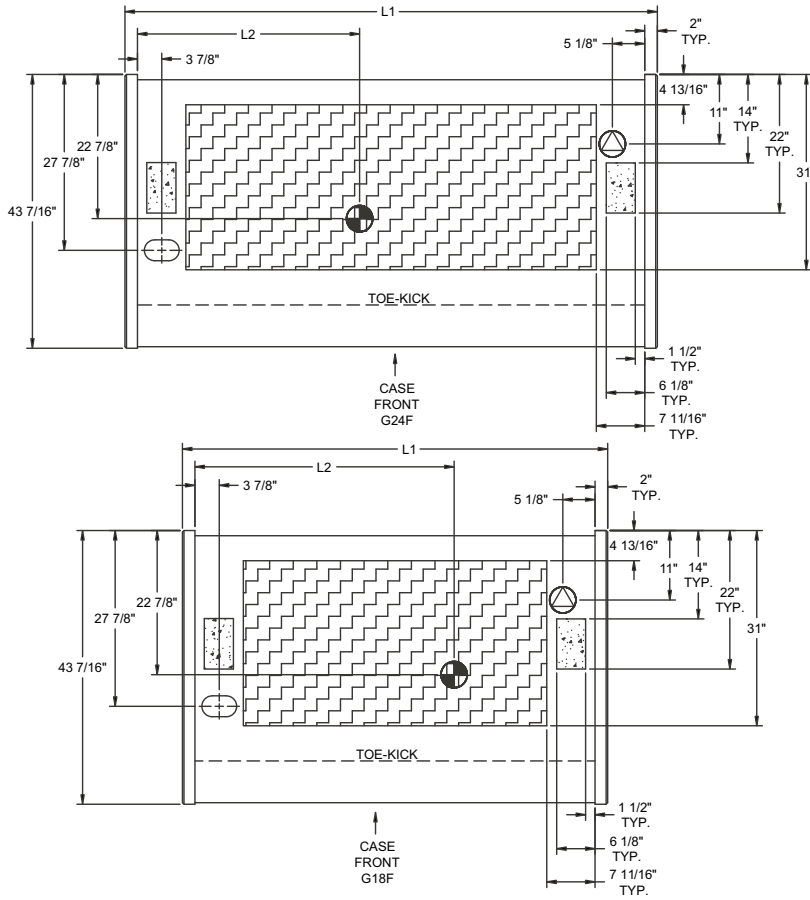
## PRODUCT SPECIFICATIONS

Intended Use of Display Area: Packaged frozen products

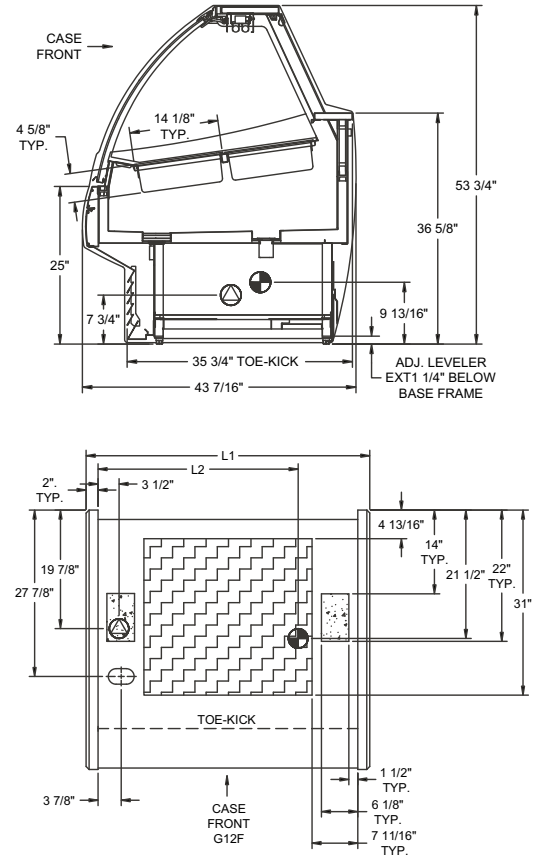
Integrated Product Temperature (IPT): -2°F

Intended Environment: Designed to operate in ambient conditions of 75°F / 55% relative humidity.

### PLAN VIEW



### SIDE VIEW



NOTE: ALL DIMENSIONS APPROXIMATE

- ELECTRICAL JUNCTION BOX (SUPPLIED WITH 6" LEADS OR POWER CORD).
- REFRIGERATION LINE CONNECTION.
- SELF-CONTAINED CASE SERVICE ACCESS AREA.
- LOCATION OF CONDENSATE DRAIN TUBE (SUPPLIED WITH 3/4" OR 1 1/2" PVC DRAIN TUBE).
- REMOTE CASE SERVICE ACCESS AREA.
- DRY CASE SERVICE ACCESS AREA.

Model	Self-Contained Refrigeration/Dry					Remote Refrigeration w/Leads				
	L1*	L2*	Volts++	Amps	NEMA Plug	Volts++	Amps***	BTUH	Ship Wt	Frt CIs
G12F	47 3/4	33 1/2	220/1/60**	13.538	NEMA 14-20P	220/1/60**	2.8	2400	1150	110
G18F	67 3/4	41 1/8	220/1/60**	14.419	NEMA 14-20P	220/1/60**	2.724	3600	1350	110
G24F	84 3/4	35 1/4	220/1/60**	16.32	NEMA 14-20P	220/1/60**	4.09	4500	1550	110

++ Operating range for 120 volt rating is 110-120 volts; operating range for 220 volt rating is 208-230 volts.

\*\* Requires 3 wires + ground

\*\*\* Does not include electric defrost on freezer models

### REGULATORY APPROVALS

- ETL Listed Certified to CAN/CSA 22.2
- ETL Listed Conforms to UL 471
- ETL Sanitation Conforms to NSF 7

### Important Note:

Remote refrigeration requires customer to have existing hot gas defrost system. Contact factory for hot gas defrost system specifications required to support these models.

### Important Note:

Unit requires a weekly manual defrost